



Elderfield Place, SW17

£465,000

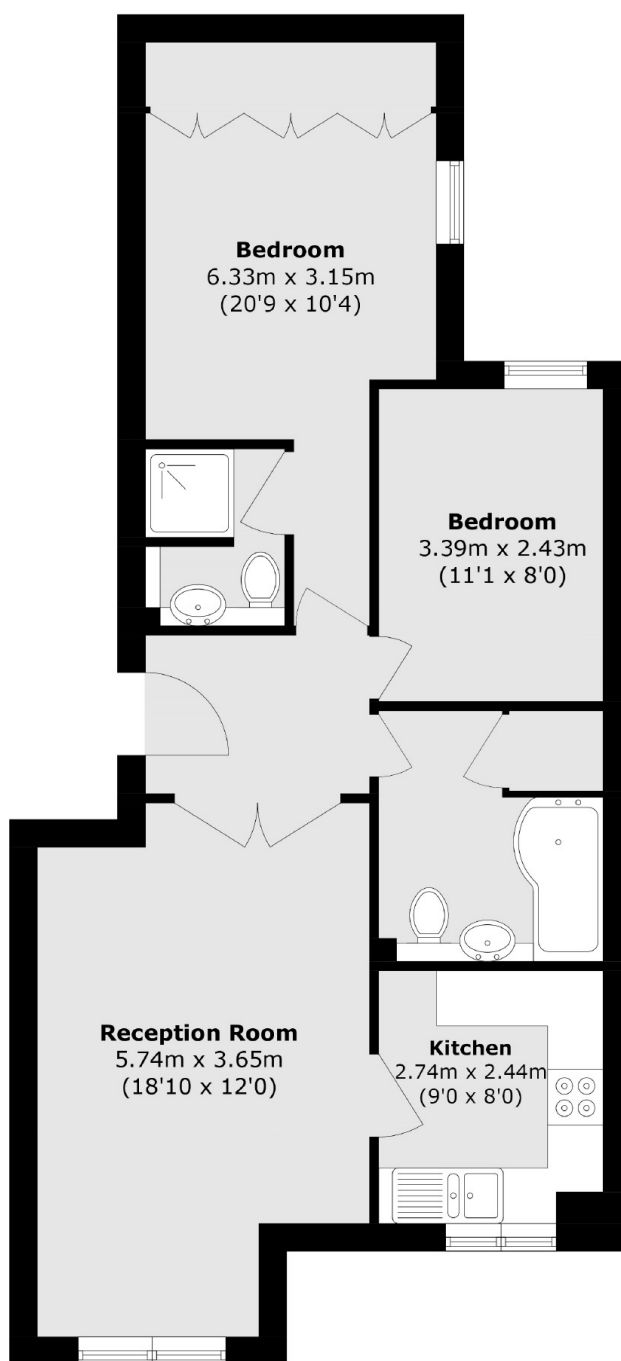
A beautifully presented and maintained two double bedroom apartment in the heart of Heritage Park with a generous footprint throughout comprising a superb front reception room with an integral fitted kitchen with ample space for dining, two double bedrooms with the principal bedroom furnished with an en-suite, a three piece family bathroom and off-street parking.

Elderfield Place is located on the doorstep of Tooting Common with easy access to the many shops, bar and restaurants of Tooting High Street. Tooting Bec and Balham Underground stations are only a short stroll away.

Features

- Two Double Bedrooms
- Two Bathrooms
- Share of Freehold
- x2 Parking Spaces
- Heritage Park
- Built-In Storage

Elderfield Place, London, SW17



Total area (approx.): 64.4 sq. m (693.2 sq. ft)

Dexters

Tooting
48 Tooting High Street
London
SW17 0RG
Sales
020 8545 8582

Energy Rating: . We aim to make our particulars both accurate and reliable. However they are not guaranteed; nor do they form part of an offer or contract. If you require clarification on any points then please contact us, especially if you're traveling some distance to view. Please note that appliances and heating systems have not been tested and therefore no warranties can be given as to their good working order.

 **RICS** | Regulated
Estate Agent
and Letting Agent

[dexters.co.uk](https://www.dexters.co.uk)