

Furlong Avenue, CR4

£1,750 Per calendar month

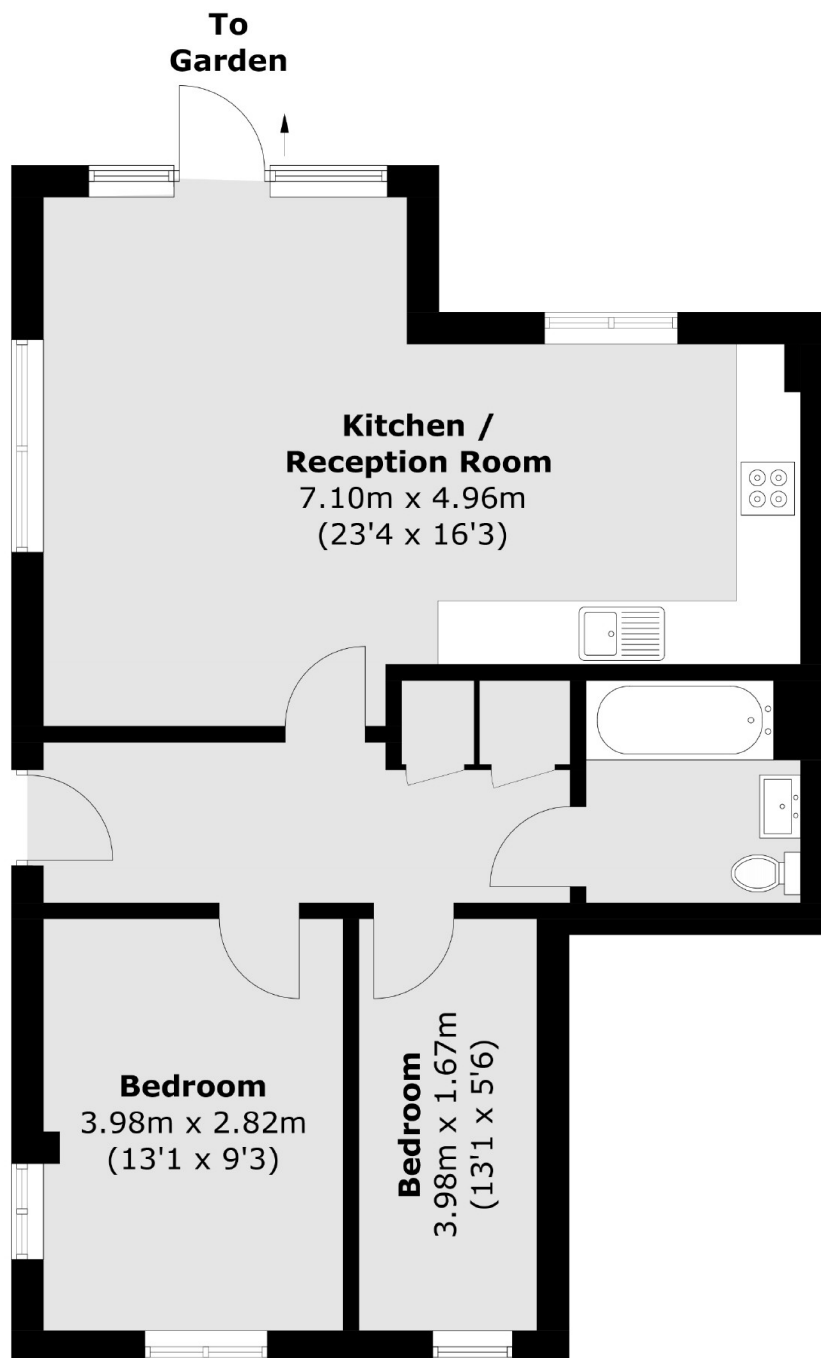
A modern two bedroom flat located within easy access to Mitcham Eastfields Station. The property benefits from a spacious open plan kitchen living area, tiled bathroom and private garden.

Eliot Court is ideally located for commuting to London via Mitcham Eastfields and Tooting Railway Station. The open green space of Morden Hall Park is also close by.

Features

- Two Bedrooms
- Open Plan Living
- Private Garden
- Furnished
- Off Street Parking
- Close To Green Spaces

Furlong Avenue, Mitcham, CR4



Total area (approx.): 60.9 sq. m (655.5 sq. ft)

Dexters

Tooting
48 Tooting High Street
London
SW17 0RG
Lettings
020 8545 8583

Energy Rating: . We aim to make our particulars both accurate and reliable. However they are not guaranteed; nor do they form part of an offer or contract. If you require clarification on any points then please contact us, especially if you're traveling some distance to view. Please note that appliances and heating systems have not been tested and therefore no warranties can be given as to their good working order.

 **RICS** | Regulated
Estate Agent
and Letting Agent

[dexters.co.uk](https://www.dexters.co.uk)