



Ipswich Road, SW17

£625,000

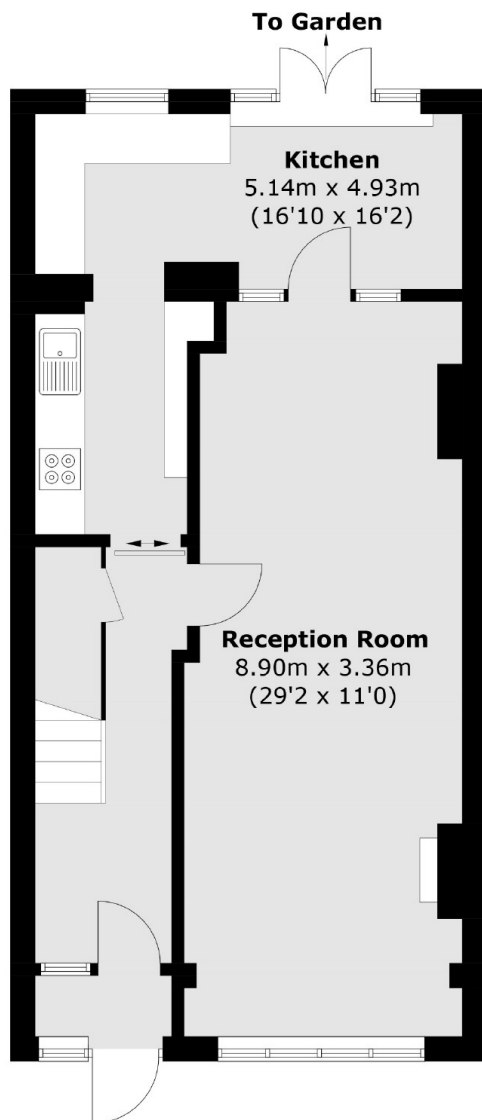
A charming three bedroom home in the heart of the ABC roads with a generous footprint extending to over 1000 sqft spanning over two floors. Opening onto a generous through reception room, the property benefits from a rear kitchen, a large garden, three bedrooms, a three piece family bathroom and further scope for extending (STPP).

Ipswich Road is a quiet residential road located in the ABC roads with great proximity to central Tooting and Furzedown Village. The vast shops, bars and restaurants of Tooting Broadway as well as excellent transport links of the Underground and Tooting Railway are within walking distance.

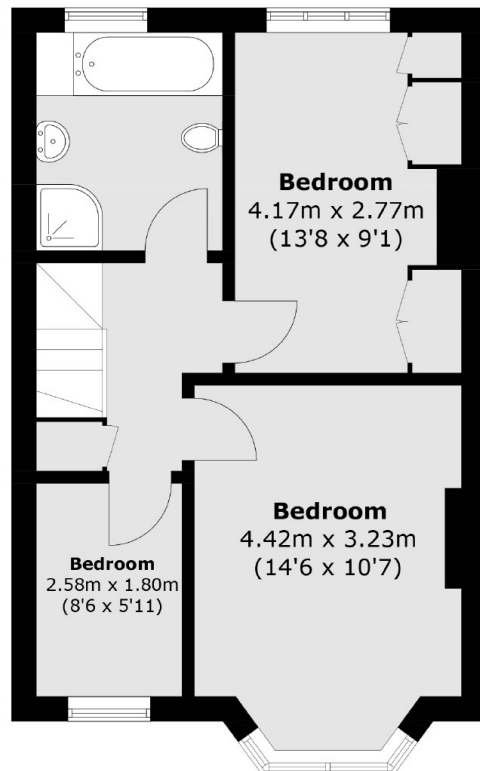
Features

- Three Bedrooms
- Potential to Extend (STPP)
- Double Reception Room
- ABC Roads
- Desirable Location
- Large Garden

Ipswich Road, London, SW17



Ground Floor



First Floor

Total area (approx.): 100.6 sq. m (1,082.9 sq. ft)