



Walpole Road, SW19

£700,000

A stunning and well maintained three bedroom home positioned in the heart of Tooting with a superb garden, private off-street parking and wonderful interior throughout.

Walpole Road is nestled away in the heart of Colliers Wood with the many shops and amenities on the doorstep, including the Tandem Centre with a Sainsbury's & M&S nearby. The wide green open spaces of Wandle Park and excellent transport links of Colliers Wood & Tooting Broadway Underground stations are also a stones throw away.

Features

- Three Double Bedrooms
- South Facing Garden
- Desirable Location
- Stylish Kitchen
- Large Reception Room
- Private Off-Street Parking



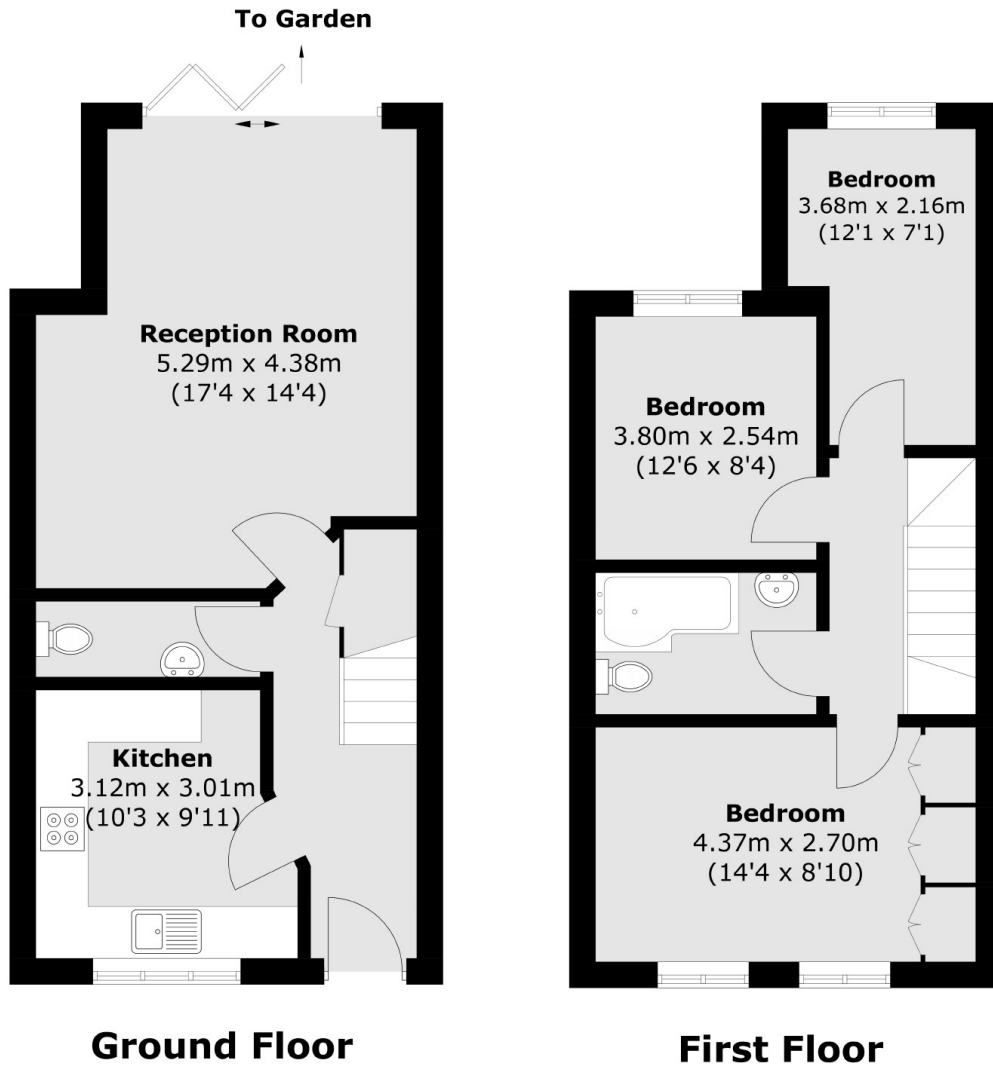
Walpole Road, SW19

With a handsome and inviting exterior, the property opens onto a stylish yet practical kitchen furnished with wall and base units, solid worktops and ample storage. The heart of the home lies at the rear with a generous reception room complimented with a comfortable seating and dining area and bi-folding doors opening to a superb south facing rear garden. The ground floor is further balanced by a downstairs w/c.

Over the first floor there are three generous double bedrooms with the principal bedroom furnished with built-in storage and a three piece family bathroom.



Walpole Road, London, SW19



Total area (approx.): 77.7 sq. m (836.3 sq. ft)