



Trevelyan Road, SW17

£900,000

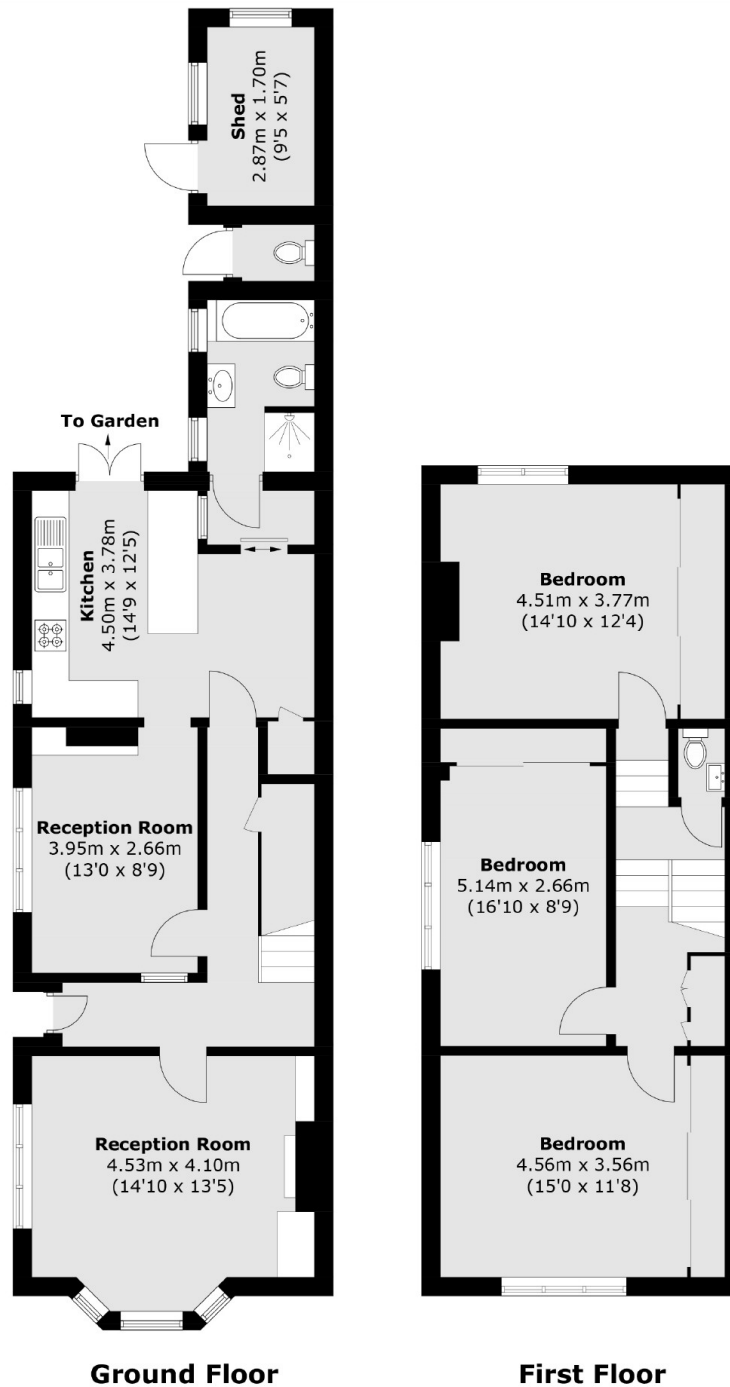
A truly rare and impressive freehold home with a superb plot on a prime road in Tooting Broadway with huge potential to extend (STPP). Accommodation comprises a comfortable front reception room, a large eat-in kitchen/breakfast room with a separate dining area, three generous double bedrooms and a three piece family bathroom with a superb rear garden.

Trevelyan Road is a quiet tree lined residential street with a vast array of boutiques, shops, bars and restaurants on the doorstep. The wide transport links of Tooting Broadway Underground and Tooting Railway stations are also within walking distance. It is in close proximity to Tooting, Wandsworth and Wimbledon Commons for access to South London's best green spaces.

Features

- Chain Free
- Large Plot
- Potential to Extend (STPP)
- Front Reception Room
- Desirable Location
- Side Access

Trevelyan Road, London, SW17



Approx Internal Area: 121.1 sq. m (1,303.5 sq. ft)
External WC & Shed: 6.6 sq. m (71.0 sq. ft)
Total: 127.7 sq. m (1,374.5 sq. ft)

Dexters

Tooting
48 Tooting High Street
London
SW17 0RG
Sales
020 8545 8582

Energy Rating: . We aim to make our particulars both accurate and reliable. However they are not guaranteed; nor do they form part of an offer or contract. If you require clarification on any points then please contact us, especially if you're traveling some distance to view. Please note that appliances and heating systems have not been tested and therefore no warranties can be given as to their good working order.

 **RICS** | Regulated
Estate Agent
and Letting Agent

[dexters.co.uk](https://www.dexters.co.uk)