



## Ansell Road, SW17

£3,700 Per calendar month

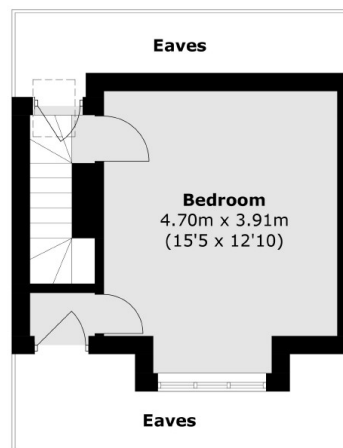
A neutrally decorated four double bedroom house with a private garden. The property benefits from a separate reception room, galley kitchen and a driveway for two cars making it perfect for professional sharers.

Ansell Road is a popular residential street perfectly place within easy reach of the shopping and leisure amenities of Tooting, the frequent underground Northern line links of Tooting Broadway and the open spaces of Tooting Bec Common.

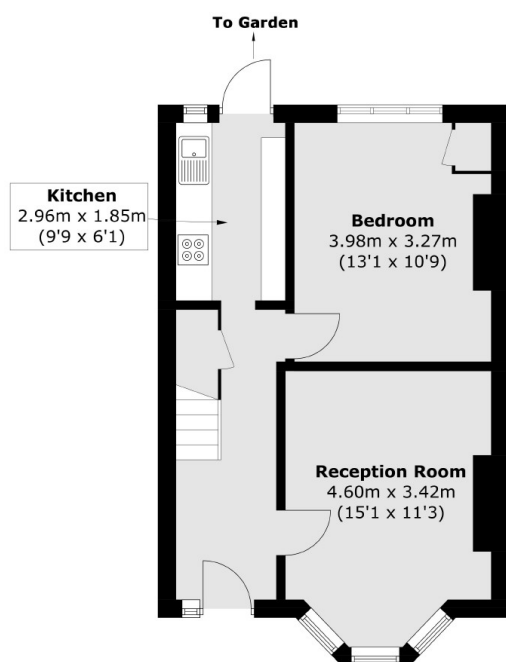
### Features

- House
- Four Double Bedrooms
- Private Garden
- Furnished
- Modern Kitchen
- Driveway

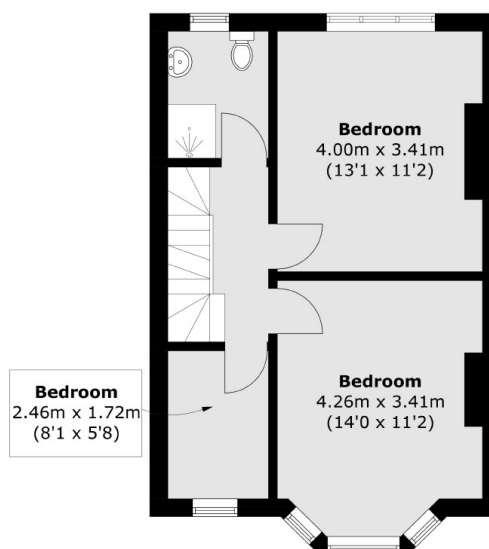
# Ansell Road, London, SW17



**Second Floor**



**Ground Floor**



**First Floor**

Total area (approx.): 106.9 sq. m (1150.6 sq. ft)  
(Excluding Eaves)