



Church Lane, SW17

£3,800 Per calendar month

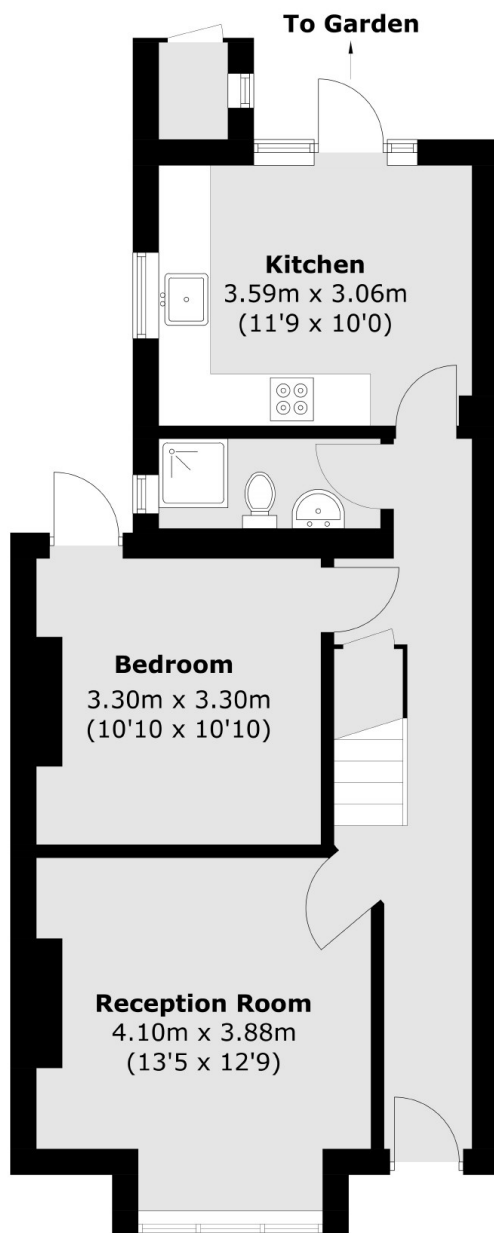
A well proportioned four double bedroom house consisting of a large reception room, separate eat-in kitchen, two bathrooms and a private garden situated in the heart of Tooting.

Church Lane is conveniently located for Tooting Broadway tube station. Tooting High Street with its vast array of restaurants and bars is also close by as are the beautiful open spaces of Tooting Bec Common.

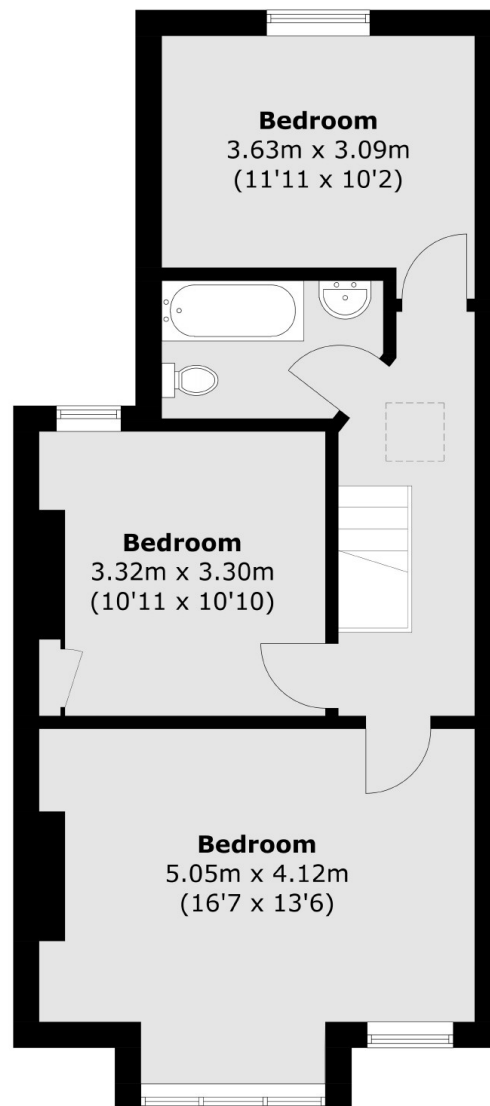
Features

- Four Double Bedrooms
- Separate Eat-In Kitchen
- Two Bathrooms
- High Ceilings
- Private Garden
- Tooting Broadway

Church Lane, London, SW17



Ground Floor



First Floor

Total area (approx.): 105.9 sq. m (1,139.9 sq. ft)
External Cupboard area (approx.): 0.9 sq. m (9.7 sq. ft)