

Fir Tree Avenue, CR4

£4,000 Per calendar month

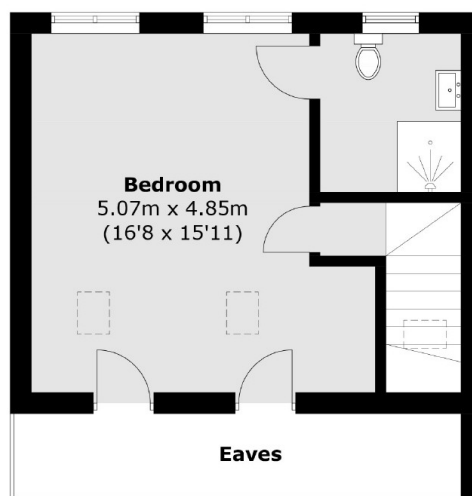
A newly refurbished four double bedroom house. The property benefits from four en-suite bathrooms, a private garden and driveway, making it perfect for professional sharers.

Fir Tree Avenue is located with a variety of shops, bars and restaurants on your doorstep. Excellent transport links are within walking distance at Mitcham Eastfields station as well as Tooting Railway Station.

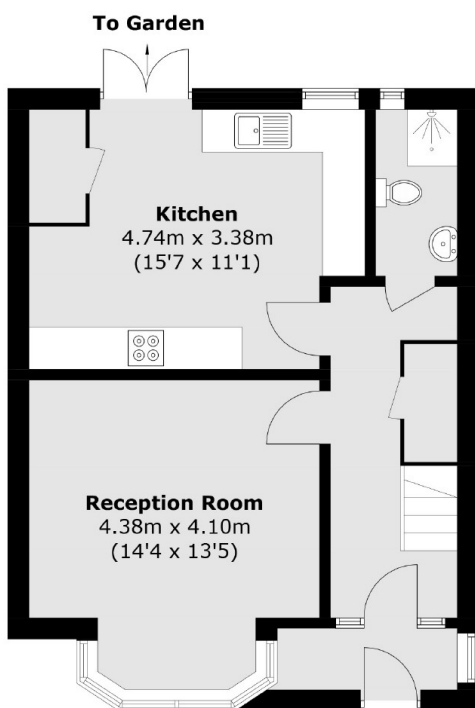
Features

- House
- Four Double Bedrooms
- Four Bathrooms
- Private Garden
- Driveway
- Newly Refurbished

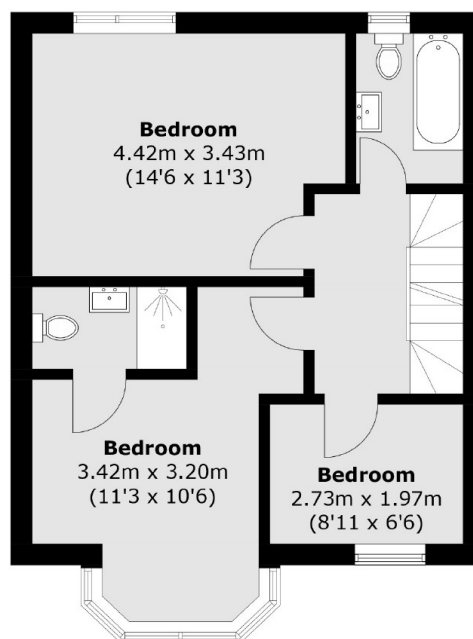
Fir Tree Avenue, Mitcham, CR4



Second Floor



Ground Floor



First Floor

Total area (approx.): 125.8 sq. m (1,354.1 sq. ft)
(Excluding Eaves)