



Ashbourne Road, CR4

£550,000

A truly stunning and exquisite example of an upper maisonette positioned over the first and top floor of this handsome Victorian building with a footprint that spans to 1041 sqft. With an immaculate interior, the property benefits from a superb open-plan kitchen/reception room, three bedrooms and two bathrooms.

Situated on a quiet residential street conveniently located within easy reach of both Tooting station & Tooting Broadway underground, close to the green open spaces of Figges Marsh and the vast array of shops, bars and restaurants of Tooting nearby - including the popular Tooting Market.

Features

- Three Double Bedrooms
- Two Bathrooms
- Own Front Door
- Chain Free
- Split Level
- Desirable Location



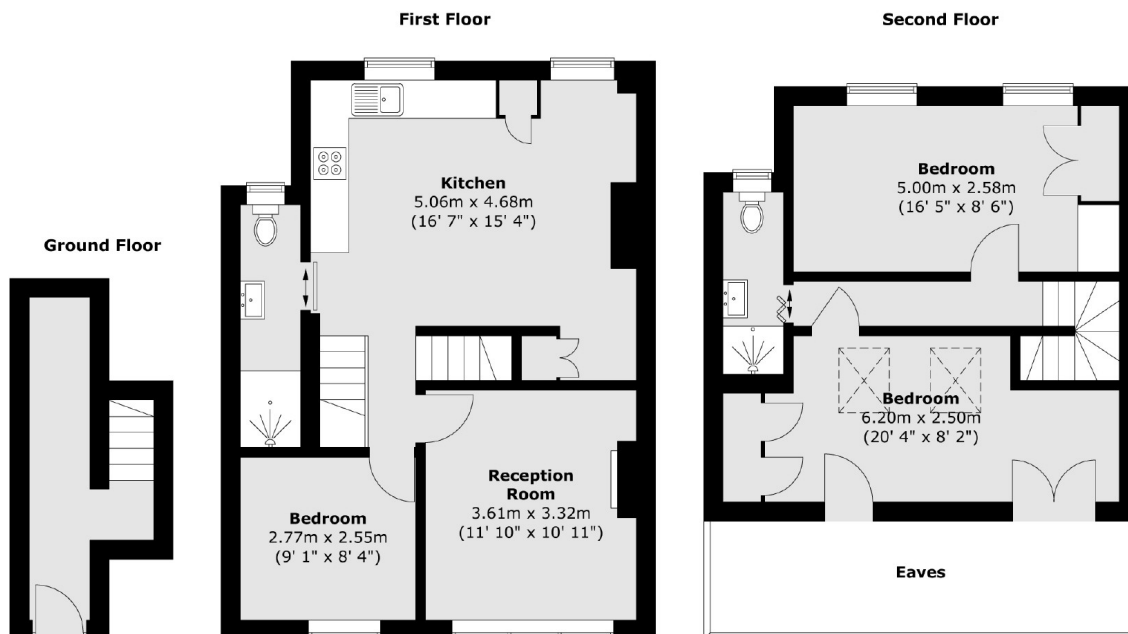
Ashbourne Road, CR4

With an inviting exterior, the property opens onto a large entrance area with ample storage. Over the first floor, there is a large open plan kitchen-diner, thoughtfully designed with plenty of storage, inbuilt appliances and large windows that flood the room with natural light. Furnished with a feature fireplace and a comfortable seating area, there is a generous front reception room to the front of the property with a spacious double bedroom and a three piece bathroom also befitting the first floor with further storage under the staircase.

Over the top floor, there are a further two generous bedrooms with the principal bedroom furnished with built-in wardrobes and south facing views. A spacious and well arranged three piece bathroom is also positioned over this floor.



Ashbourne Road, Mitcham, CR4



Total area (approx.) : 94.2 sq. m (1014 sq. ft)
(excluding eaves)