



## Longley Road, SW17

£400,000

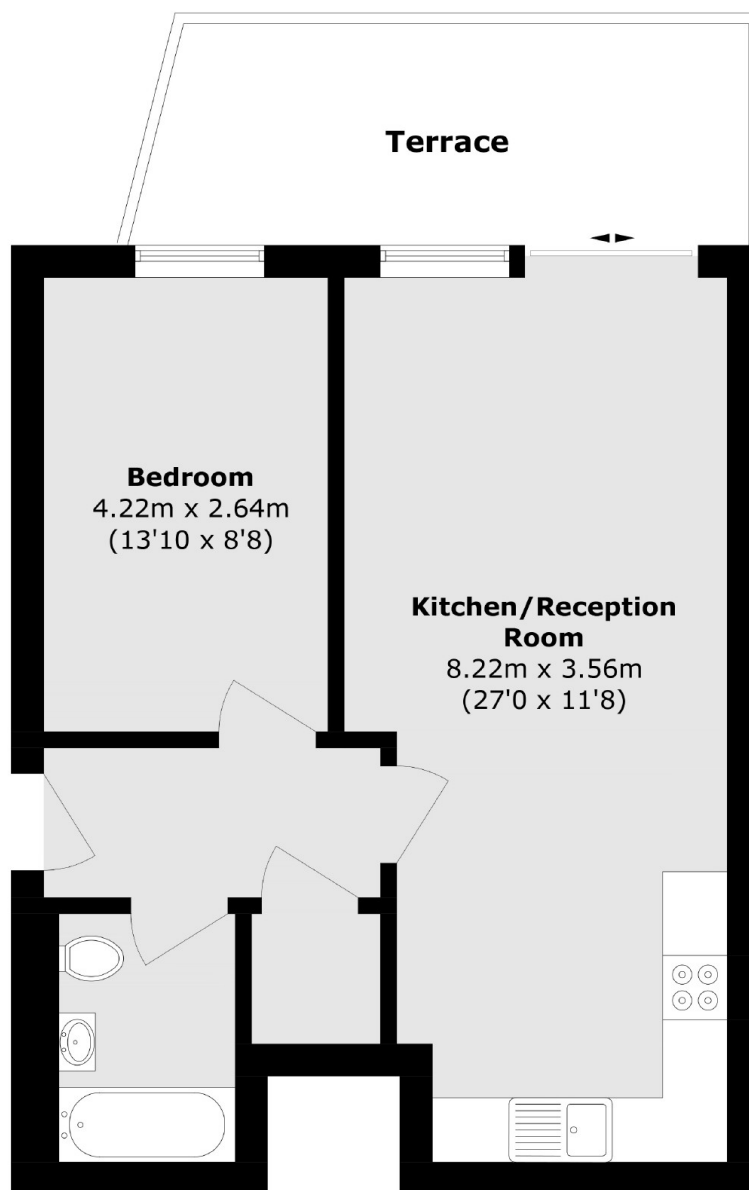
A larger than average one double bedroom apartment in a newly built development benefitting from an open plan kitchen/reception room with a fitted kitchen, a large double bedroom, a three piece family bathroom and a private garden.

Longley Road is a conveniently located residential street with excellent access to the many shops, bars and restaurants of central Tooting, with easy access to Tooting Railway and Tooting Broadway Underground stations.

### Features

- One Double Bedroom
- Large Kitchen/Living Area
- Stylish Apartment
- Private Garden
- Convenient Location
- Gated Development

Longley Road,  
London, SW17



Total area (approx.): 50.1 sq. m (539.2 sq. ft)  
Terrace area (approx.): 11.3 sq. m (121.6 sq. ft)

**Dexters**

Tooting  
48 Tooting High Street  
London  
SW17 0RG  
Sales  
020 8545 8582

Energy Rating: B. We aim to make our particulars both accurate and reliable. However they are not guaranteed; nor do they form part of an offer or contract. If you require clarification on any points then please contact us, especially if you're traveling some distance to view. Please note that appliances and heating systems have not been tested and therefore no warranties can be given as to their good working order.

 **RICS** | Regulated  
Estate Agent  
and Letting Agent

[dexters.co.uk](https://www.dexters.co.uk)