



Seely Road, SW17
£915,000

Dexters



Seely Road, SW17

A beautifully presented and fully extended mid terrace home on the ABC roads split over three floors with five generous bedrooms, a superb open-plan kitchen/reception room, two bathrooms and a stunning south facing landscaped garden.

With a handsome and inviting exterior, the property opens onto a wonderfully balanced front reception room furnished with solid wooden floors, a square bay window and a fireplace of its time. The heart of the home lies at the rear with a fully extended fitted kitchen/dining room complimented by integrated appliances, wall and base units and a breakfast island taking centre stage. Bi-folding doors opening onto a landscaped south facing garden.

Over the first and top floors, there are five generous bedrooms and two bathrooms. The property has been meticulously maintained by the current owners and is sold chain free and holds a great position within catchment of Ofsted outstanding Graveney School (subject to admissions).

Seely Road is at the heart of the ABC roads in central Tooting, located very close to the many shops, bars and restaurants of Tooting High Street and sits on the doorstep of Furzedown Village with Tooting Railway & Broadway Underground stations nearby.

Features

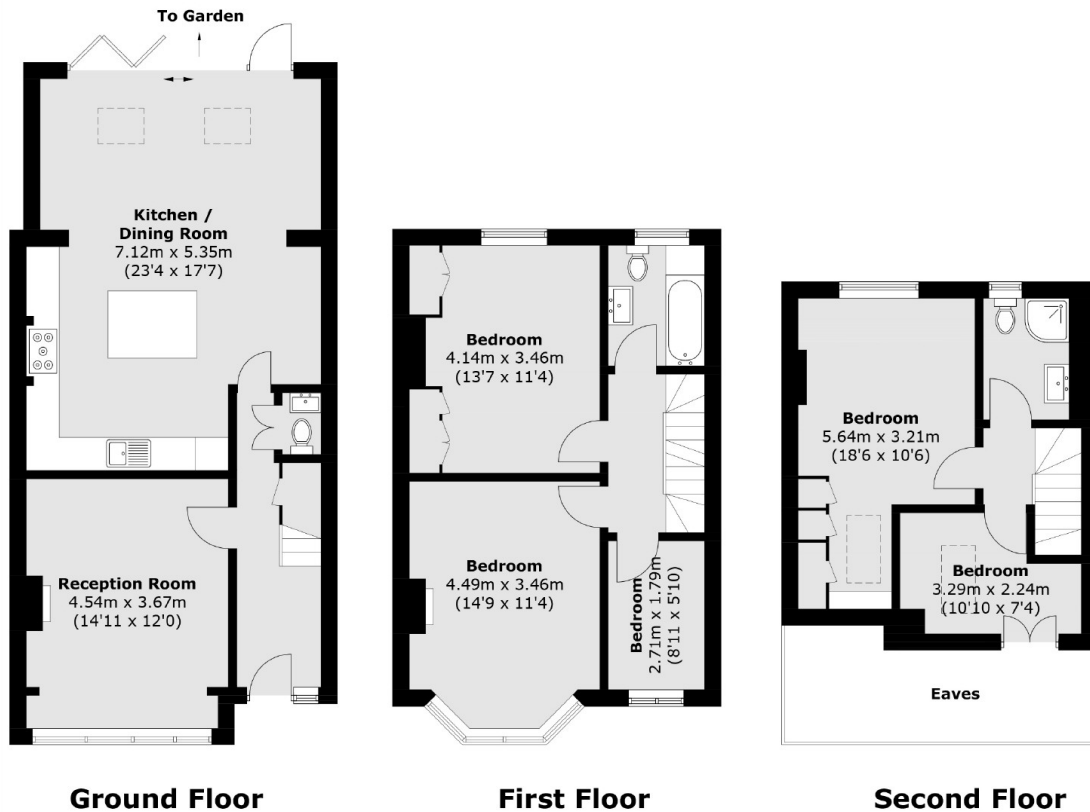
- Five Bedrooms
- Fully Extended
- Immaculate Interior
- South Facing Garden
- Graveney School Catchment
- ABC Roads







Seely Road, London, SW17



Total area (approx.): 136.5 sq. m (1,469.2 sq. ft)
(Excluding Eaves)