

## Coteford Street, SW17

£2,400 Per calendar month

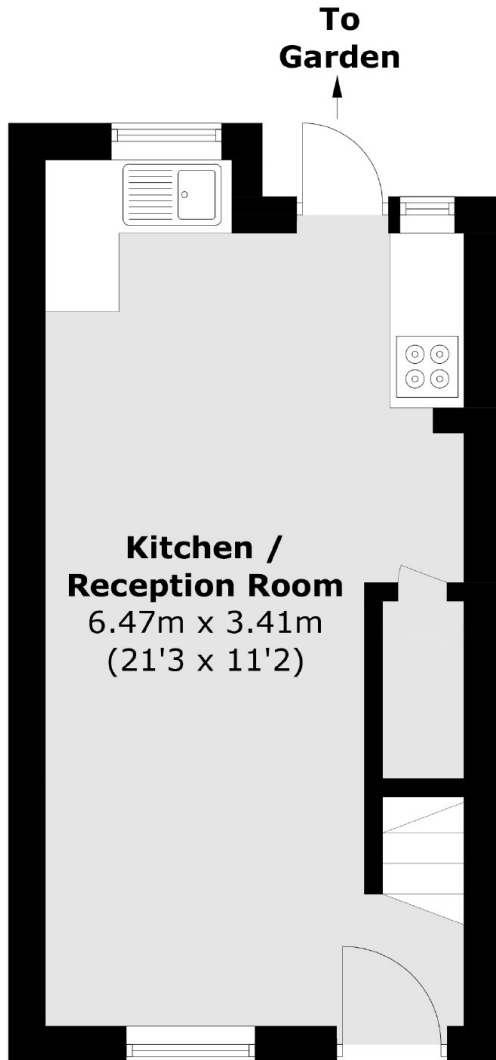
A charming two bedroom house located in Tooting Bec. The property has been recently refurbished to a high standard and benefits from a private garden.

Coteford Street is a quiet tree lined residential street nestled moments away from the green open spaces of Tooting Bec Common and the many shops, bars and restaurants of Tooting High Street with easy access to bus links and both Tooting Bec & Broadway Underground stations.

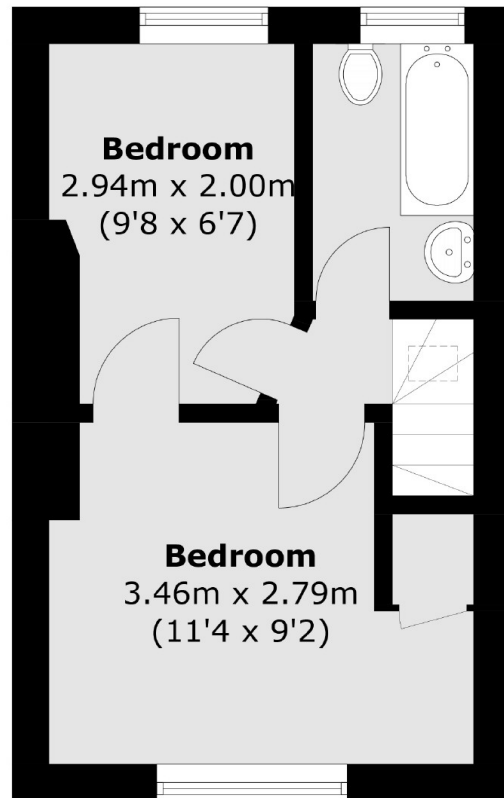
### Features

- House
- Two Bedrooms
- Private Garden
- Newly Refurbished
- Wooden Floors
- Tooting Bec

# Coteford Street, London, SW17



**Ground Floor**



**First Floor**

Total area (approx.): 43.5 sq. m (468.2 sq. ft)