



## Inglemere Road, CR4

### £625,000

A stunning example of an upper maisonette occupying the first and top floors of this handsome Victorian building and extending to over 1000 sqft with a private garden.

Inglemere Road is centrally located for the many shops, bars and restaurants of central Tooting with Tooting Railway station on the doorstep and Tooting Broadway Underground station also within walking distance. The green open spaces of Figges Marsh are a stones throw away.

### Features

- Three Bedrooms
- Private Garden
- Own Front Door
- Desirable Location
- Stylish Bathroom
- Eat-in Kitchen



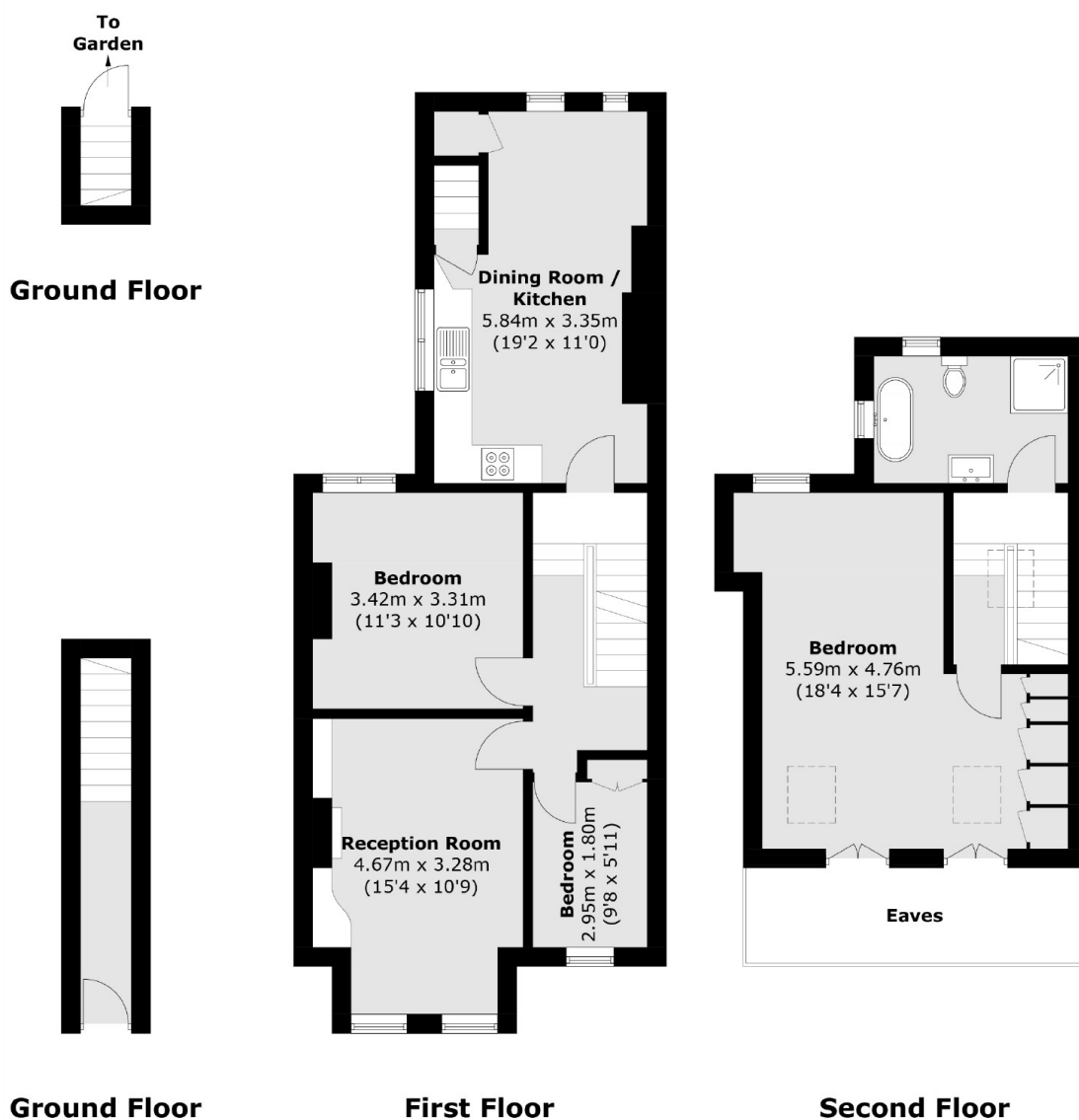
## Inglemere Road, CR4

With its own front door, the property opens onto a spacious and well-presented eat-in kitchen with a vast array of wall and base units, solid worktops and a comfortable dining area with doors leading to a private landscaped garden. The first floor is further balanced with two spacious bedrooms and a south-facing front reception room that benefits from an abundance of light and has been wonderfully laid out with bespoke shelving, wide bay window and period coving.

Over the top floor, there is a bright and airy principal double bedroom wonderfully complemented by built-in wardrobes, with a three-piece family bathroom also serving the flat.



# Inglemere Road, Mitcham, CR4



Total area (approx.): 100.0 sq. m (1,076.3 sq. ft)  
(Excluding Eaves)

## Dexters

Tooting  
48 Tooting High Street  
London  
SW17 0RG  
Sales  
020 8545 8582

Energy Rating: C. We aim to make our particulars both accurate and reliable. However they are not guaranteed; nor do they form part of an offer or contract. If you require clarification on any points then please contact us, especially if you're traveling some distance to view. Please note that appliances and heating systems have not been tested and therefore no warranties can be given as to their good working order.

**RICS** Regulated  
Estate Agent  
and Letting Agent

dexters.co.uk