



Boundary Road, SW19

£485,000

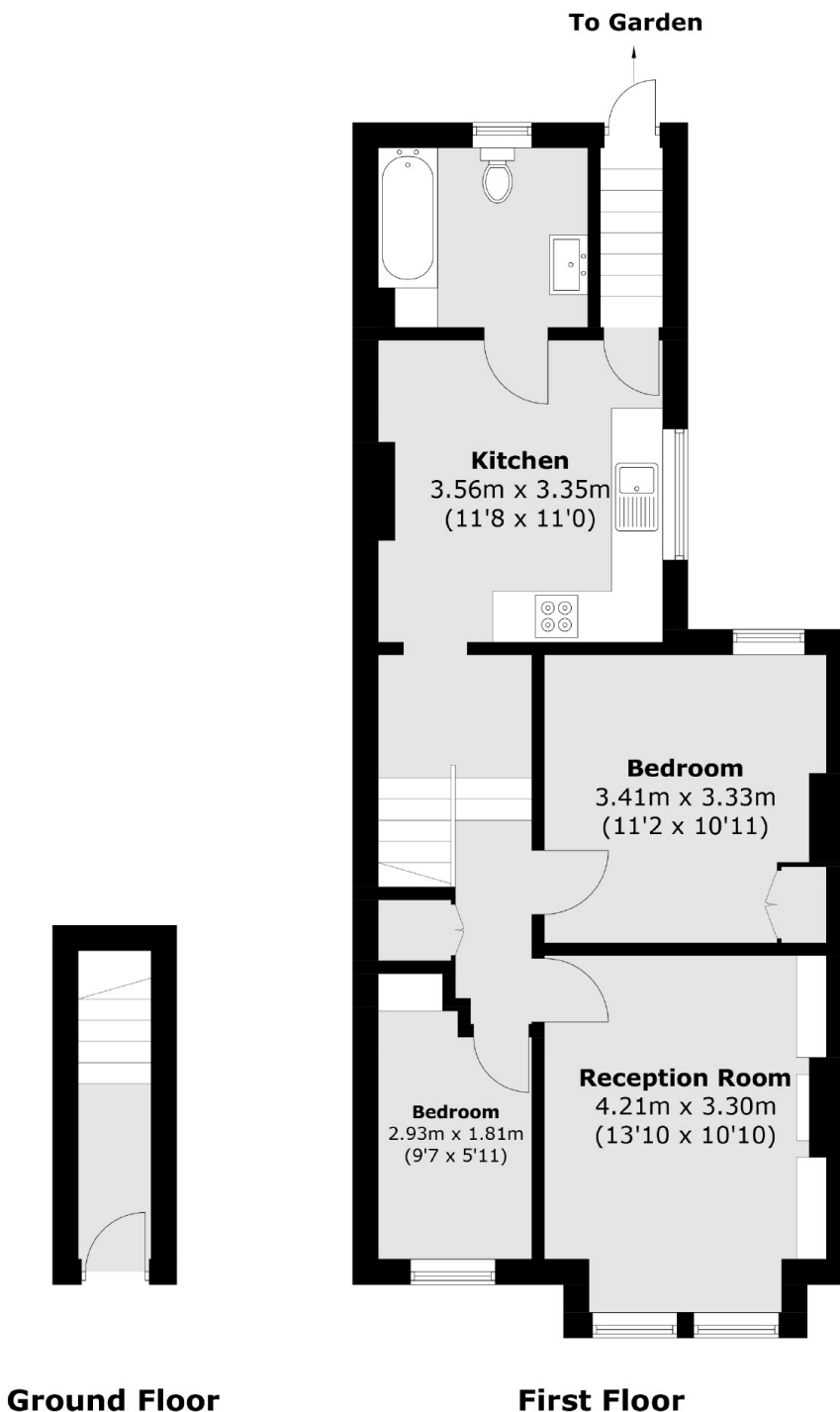
A stunning example of a two bedroom maisonette set over the first floor of this handsome Victorian building offering ample period charm throughout. Accommodation comprises of a superb reception room with fireplace and bespoke cabinetry, a stylish eat-in kitchen, two bedrooms and a three piece bathroom. The property also benefits from a private decked garden.

Boundary Road is nestled away in the heart of Colliers Wood with the many shops and amenities on the doorstep, including the Tandem Centre with a Sainsbury's & M&S nearby. The wide green open spaces of Wandle Park and excellent transport links of Colliers Wood & Tooting Broadway Underground stations are also a stones throw away.

Features

- Two Bedrooms
- Own Front Door
- Private Garden
- Further Potential to Extend (STPP)
- Long Lease
- Desirable Location

Boundary Road, London, SW19



Total area (approx.): 62.4 sq. m (671.6 sq. ft)

Dexters

Tooting
48 Tooting High Street
London
SW17 0RG
Sales
020 8545 8582

Energy Rating: C. We aim to make our particulars both accurate and reliable. However they are not guaranteed; nor do they form part of an offer or contract. If you require clarification on any points then please contact us, especially if you're traveling some distance to view. Please note that appliances and heating systems have not been tested and therefore no warranties can be given as to their good working order.

 **RICS** | Regulated
Estate Agent
and Letting Agent

[dexters.co.uk](https://www.dexters.co.uk)