



Lewis Road, CR4

£2,000 Per calendar month

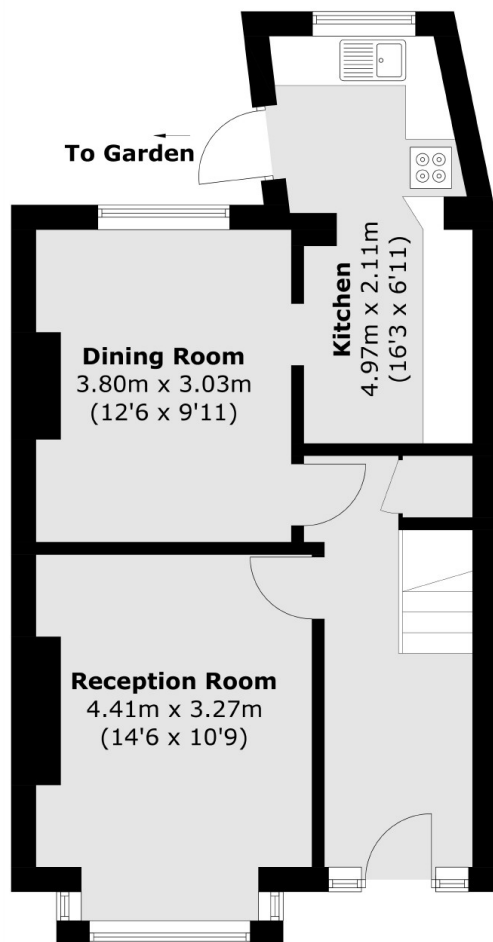
A three bedroom end of terrace house situated on Lewis Road with a large private garden. The property consists of a reception room with separate kitchen, three double bedrooms and a modern fitted bathroom.

The property is situated on a quiet residential road within walking distance to both Tooting and Mitcham Eastfields Overground stations.

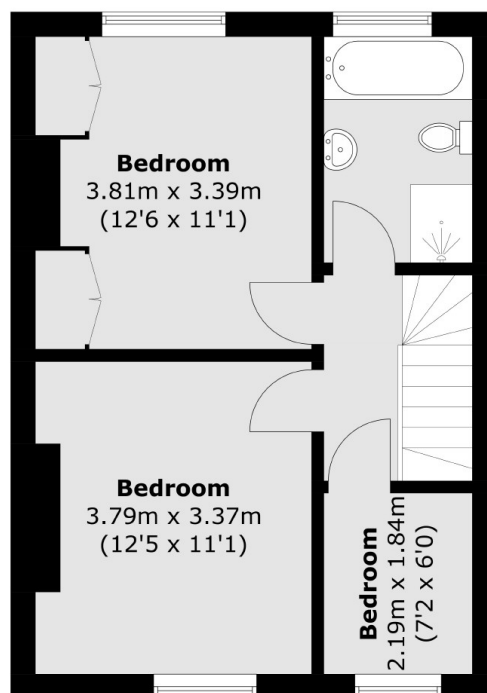
Features

- Three Double Bedrooms
- Large Private Garden
- Double Glazed
- Reception room
- End of Terrace

Lewis Road, Mitcham, CR4



Ground Floor



First Floor

Total area (approx.): 88.8 sq. m (955.8 sq. ft)