



## Fountain Road, SW17

### £575,000

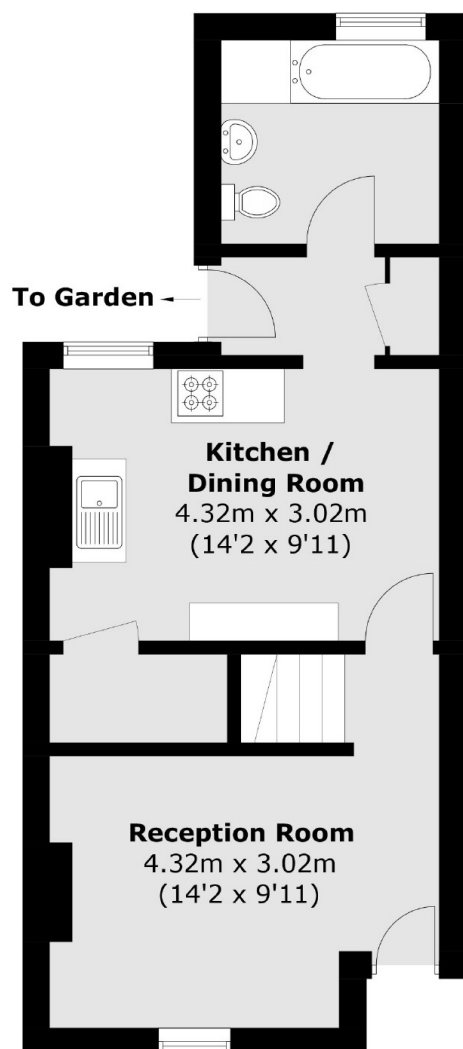
A fine example of Victorian home retaining all originality in the heart of Tooting with a generous footprint and private garden with superb opportunity to extend (STPP) and modernise. The property retains a front reception room, rear dining room, a kitchen, two double bedrooms and a three piece bathroom.

Fountain Road is located for both central Tooting & Earlsfield with their many shops, bars and restaurants on the doorstep and excellent transport links of Tooting Broadway Underground station within walking distance.

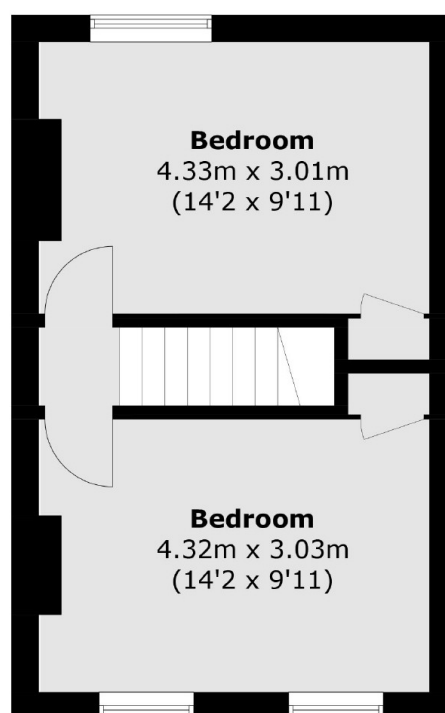
### Features

- Two Double Bedrooms
- Freehold Home
- Blank Canvas
- Potential to Extend (STPP)
- Period Features
- Desirable Location

# Fountain Road, London, SW17



**Ground Floor**



**First Floor**

Total area (approx.): 70.8 sq. m (762.0 sq. ft)