



## Springfield Drive, SW17

### £695,000

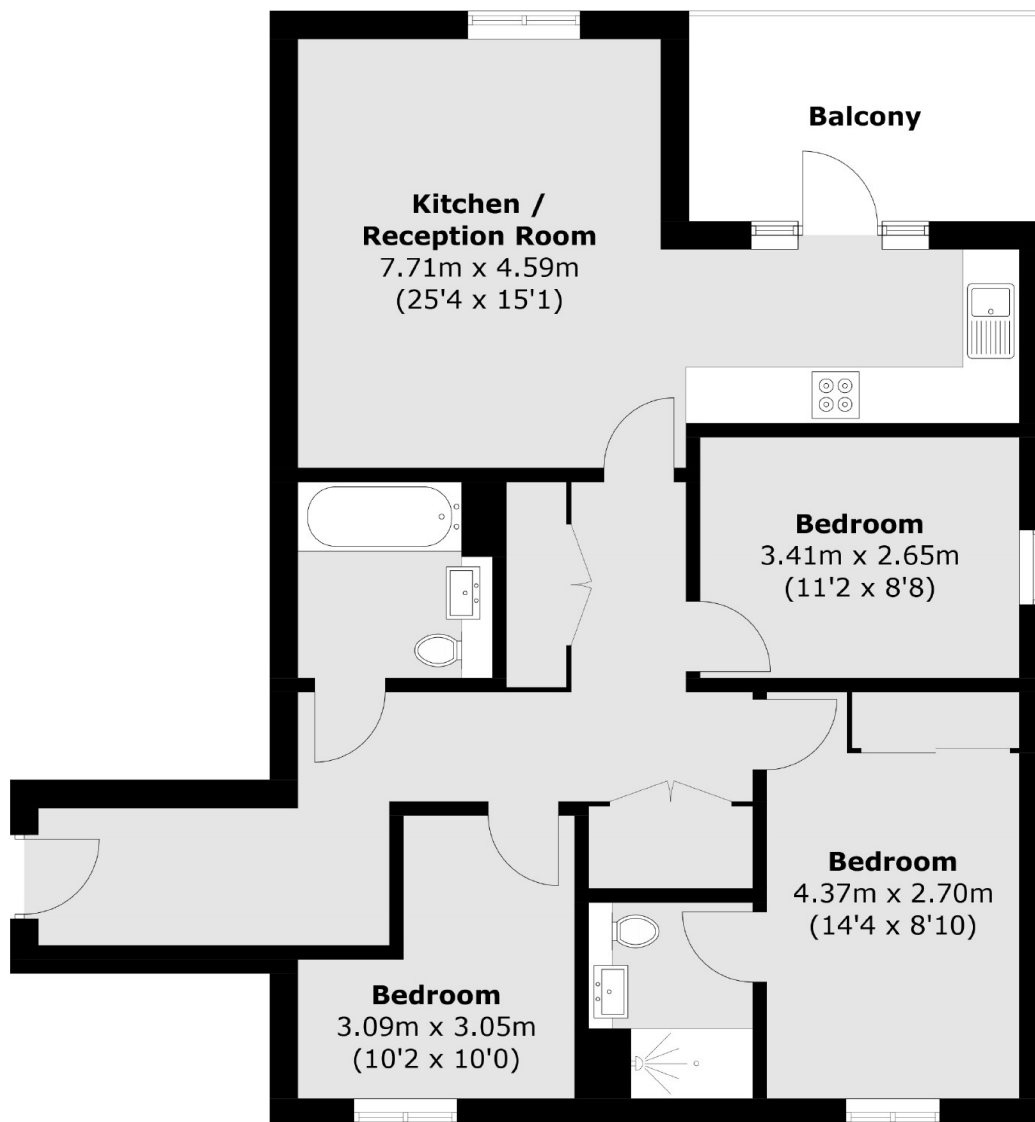
Offering fantastic proportions throughout this modern first floor flat offers three generous bedrooms, two stylish bathrooms, a spacious open plan kitchen living space with a large southerly facing private balcony. Complete with an allocated parking space, private communal garden, a long lease and an NHBC building guarantee.

Foxglove House sits within the highly desirable Springfield Place development, nestled conveniently between the popular neighbourhoods of Earlsfield, Tooting Bec and Wandsworth Common, all offering fantastic transport links into Central London via the tube and multiple overground Stations. A gym, Sainsbury's Local, nursery and cafe are set within the grounds of Springfield Place as well as the vast array of shops, restaurants and pubs on Earlsfield and Tooting High St. A new 32-acre park alongside the green spaces of Wandsworth common are only a short stroll away.

### Features

- Three Bedrooms
- Two Bathrooms
- Large Private Balcony
- Allocated Parking
- 999 Year Lease
- 10 Year NSBC Guarantee

# Springfield Drive, London, SW17



Total area (approx.): 83.1 sq. m (894.5 sq. ft)  
Balcony: 8.3 sq. m (89.3 sq. ft)

## Dexters

Tooting  
48 Tooting High Street  
London  
SW17 ORG  
Sales  
020 8545 8582

Energy Rating: C. We aim to make our particulars both accurate and reliable. However they are not guaranteed; nor do they form part of an offer or contract. If you require clarification on any points then please contact us, especially if you're traveling some distance to view. Please note that appliances and heating systems have not been tested and therefore no warranties can be given as to their good working order.

 **RICS** | Regulated  
Estate Agent  
and Letting Agent

[dexters.co.uk](https://www.dexters.co.uk)