



Elderfield Place, SW17

£450,000

OFFERS IN EXCESS OF A spacious second floor flat spanning just shy of 700 sqft set in the highly desirable Heritage Park development. Accommodation includes two double bedrooms, two bathrooms, a large reception room with separate kitchen. The property offers a share of freehold, two private off-street parking spaces and tree-lined communal grounds.

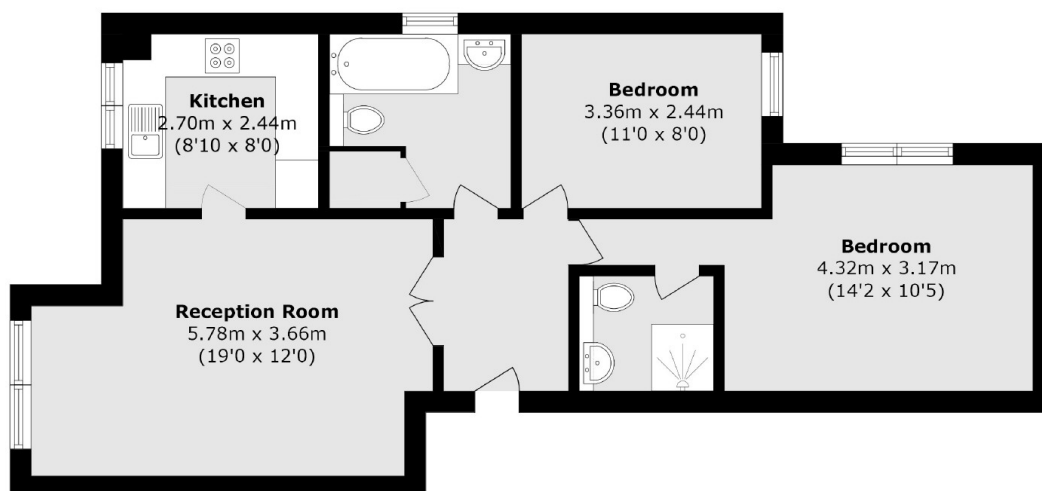
Elderfield Place is located on the doorstep of Tooting Common with easy access to the many shops, bar and restaurants of Tooting High Street. Tooting Bec and Balham Underground stations are only a short stroll away.

Features

OFFERS IN EXCESS OF

- Two Double Bedrooms
- Two Bathrooms
- Share Of Freehold
- Communal grounds
- Private Parking Spaces
- Heritage Park

Elderfield Place, London, SW17



Total area (approx.): 64.4 sq. m (693.2 sq. ft)