



Himley Road, SW17

£550,000

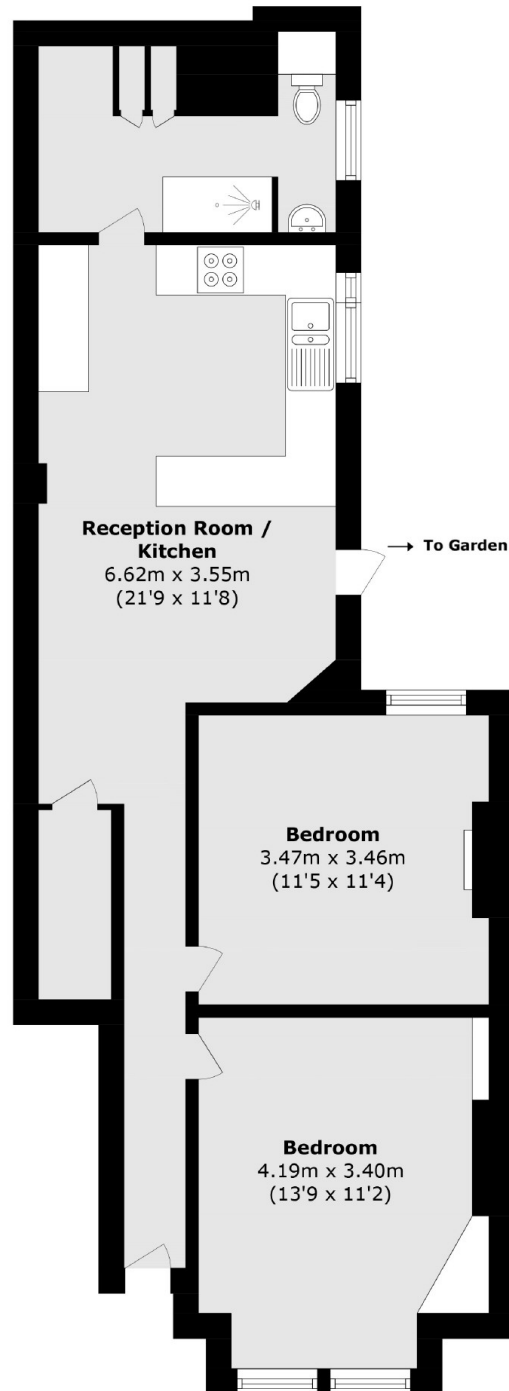
A stunning example of two bedroom ground floor apartment that has been meticulously refurbished throughout with a superb open-plan kitchen/reception room furnished with a comfortable seating and dining area, stylish kitchen and a breakfast island. Accommodation also includes two generous double bedrooms and a three piece family bathroom with large south facing garden.

Himley Road is at heart of the Graveney grid with excellent access to the vast shops, restaurants and amenities of central Tooting and it's excellent transport links of Tooting Broadway Tube and Ofsted outstanding schools also nearby.

Features

- Two Double Bedrooms
- Own Front Door
- South Facing Garden
- Desirable Location
- Stylish Kitchen
- Three Piece Bathroom

Himley Road, London, SW17



Total area (approx.): 64.1 sq. m (689.9 sq. ft)