

Elmhurst Avenue, CR4

£250,000

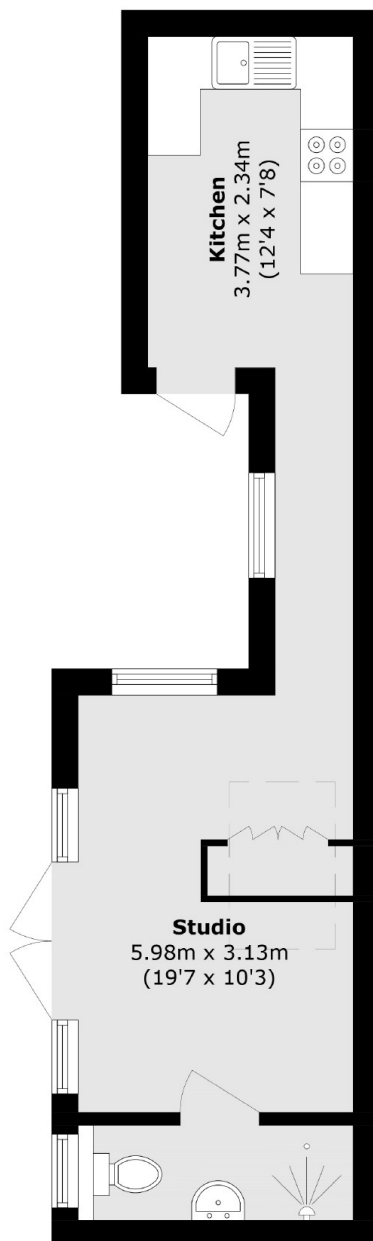
A rare and beautifully presented studio with its own entrance that has been meticulously converted with a stylish integrated kitchen, a comfortable seating and dining area, a large bedroom area and a three piece family bathroom. The property benefits from a front garden and a private courtyard.

Sitting equidistant to Streatham and Tooting, Elmhurst Avenue is wonderfully positioned for the vast shops, bars and restaurants of both town centres, with vast selection of buses and excellent transport links of Tooting Railway and Streatham Common stations also close by.

Features

- Studio Apartment
- Private Entrance
- Fitted Kitchen
- 999 Year Lease
- Desirable Location
- Newly Converted

Elmhurst Avenue, Mitcham, CR4



Total area (approx.): 30.8 sq. m (331.5 sq. ft)

Dexters

Tooting
48 Tooting High Street
London
SW17 0RG
Sales
020 8545 8582

Energy Rating: C. We aim to make our particulars both accurate and reliable. However they are not guaranteed; nor do they form part of an offer or contract. If you require clarification on any points then please contact us, especially if you're traveling some distance to view. Please note that appliances and heating systems have not been tested and therefore no warranties can be given as to their good working order.

 **RICS** | Regulated
Estate Agent
and Letting Agent

[dexters.co.uk](https://www.dexters.co.uk)