



Elmhurst Avenue, CR4

£395,000

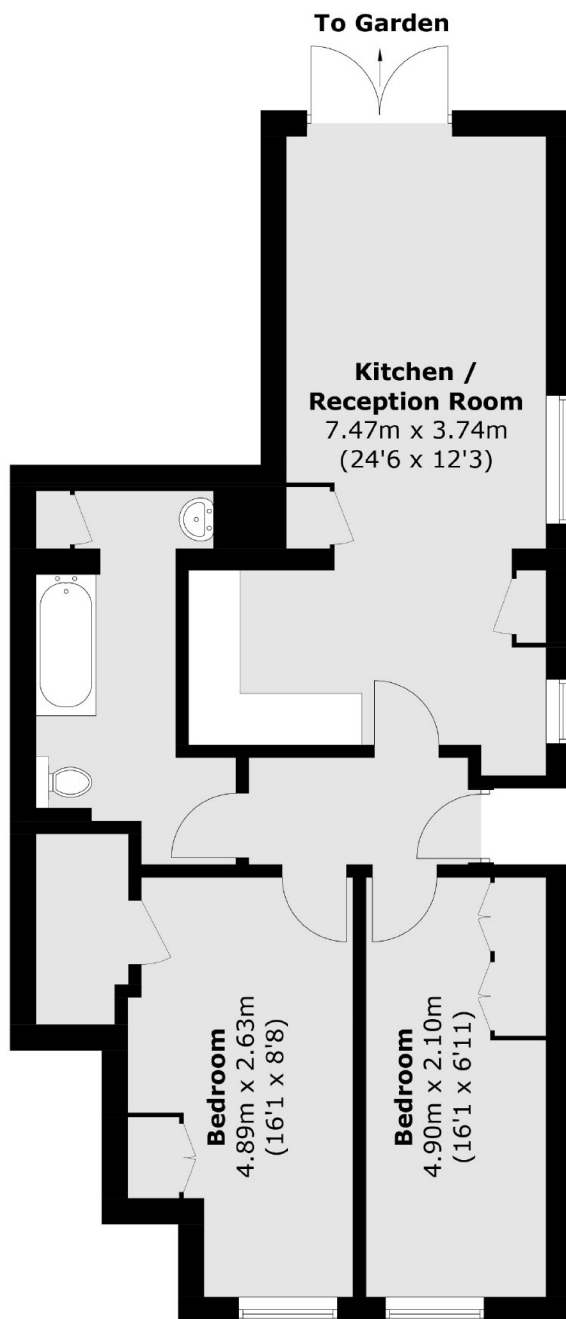
A truly stunning and beautifully presented two double bedroom ground floor maisonette that has been newly converted with an immaculate interior. The property opens onto a stylish open-plan kitchen/reception room with a fitted kitchen furnished with wall and base units, integrated appliances and solid worktops, a comfortable seating and dining area opening onto a private garden, two double bedrooms with fitted furniture and a three piece family bathroom.

Sitting equidistant to Streatham and Tooting, Elmhurst Avenue is wonderfully positioned for the vast shops, bars and restaurants of both town centres, with vast selection of buses and excellent transport links of Tooting Railway and Streatham Common stations also close by.

Features

- Own Front Door
- Newly Converted
- Private Garden
- Open-Plan Kitchen/Reception Room
- Comfortable Seating/Dining Area
- 999 Year Lease

Elmhurst Avenue, Mitcham, CR4



Total area (approx.): 63.5 sq. m (683.5 sq. ft)

Dexters

Tooting
48 Tooting High Street
London
SW17 0RG
Sales
020 8545 8582

Energy Rating: . We aim to make our particulars both accurate and reliable. However they are not guaranteed; nor do they form part of an offer or contract. If you require clarification on any points then please contact us, especially if you're traveling some distance to view. Please note that appliances and heating systems have not been tested and therefore no warranties can be given as to their good working order.

 **RICS** | Regulated
Estate Agent
and Letting Agent

dexters.co.uk