



Streatham Road, CR4

£300,000

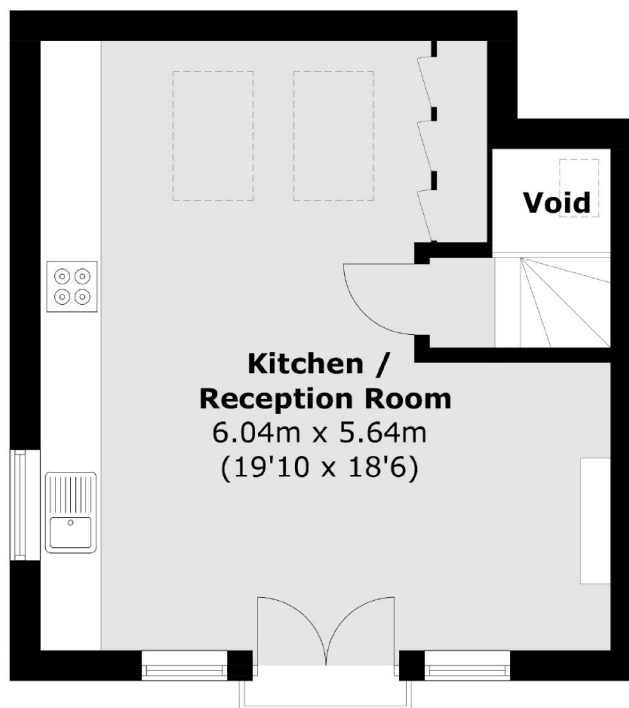
A newly converted split level one double bedroom apartment that has been meticulously thought out with a superb open-plan kitchen/reception room furnished with a stylish fitted kitchen, a comfortable seating and dining area and complimented with ample storage. The property is sold chain free and retains a three piece family bathroom, a large double bedroom with fitted furniture and benefits from an abundance of light.

Sitting equidistant to Streatham and Tooting, Streatham Road is wonderfully positioned for the vast shops, bars and restaurants of both town centres, with vast selection of buses and excellent transport links of Tooting Railway and Streatham Common stations also close by.

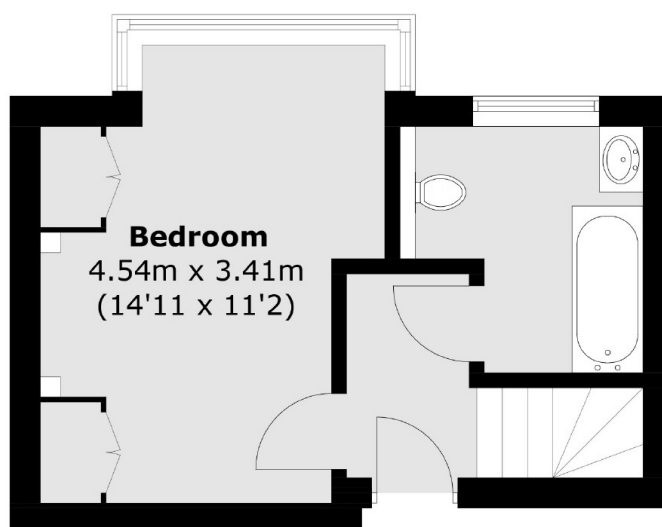
Features

Newly Converted
One Double Bedroom
Split Level
Open-Plan Kitchen/Reception
Fitted Furniture
999 Year Lease

Streatham Road, Mitcham, CR4



Second Floor



First Floor

Total area (approx.): 55.2 sq. m (594.1 sq. ft)
(Excluding Void)

Dexters

Tooting
48 Tooting High Street
London
SW17 0RG
Sales
020 8545 8582

Energy Rating: . We aim to make our particulars both accurate and reliable. However they are not guaranteed; nor do they form part of an offer or contract. If you require clarification on any points then please contact us, especially if you're traveling some distance to view. Please note that appliances and heating systems have not been tested and therefore no warranties can be given as to their good working order.

 **RICS** | Regulated
Estate Agent
and Letting Agent

[dexters.co.uk](https://www.dexters.co.uk)