



## Streatham Road, CR4

### £300,000

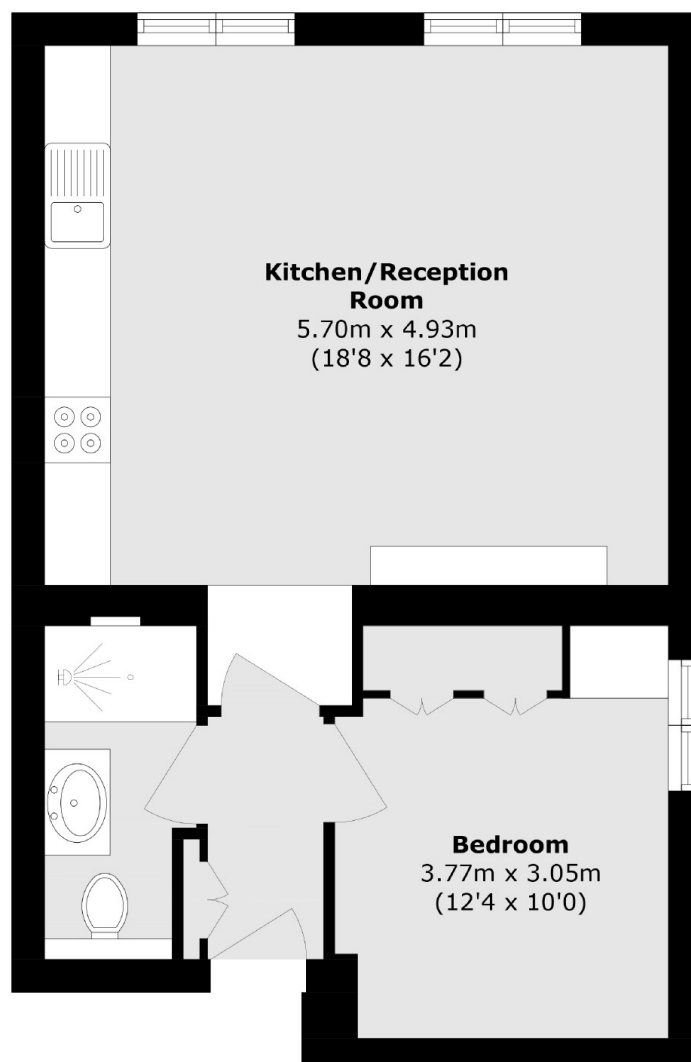
A stunning and newly converted one double bedroom apartment extending to approx 539 sqft with an open-plan kitchen/reception room furnished with a stylish fitted kitchen with integrated appliances, a large double bedroom with fitted furniture and a stylish three piece family bathroom. The property retains a new lease of 999 years and is sold chain free.

Sitting equidistant to Streatham and Tooting, Streatham Road is wonderfully positioned for the vast shops, bars and restaurants of both town centres, with vast selection of buses and excellent transport links of Tooting Railway and Streatham Common stations also close by.

### Features

- One Double Bedroom
- Newly Converted
- New 999 Year Lease
- Open-Plan Kitchen/Reception
- Fitted Furniture
- Chain Free

# Streatham Road, Mitcham, CR4



Total area (approx.): 49.7 sq. m (534.9 sq. ft)

## Dexters

Tooting  
48 Tooting High Street  
London  
SW17 0RG  
Sales  
020 8545 8582

Energy Rating: . We aim to make our particulars both accurate and reliable. However they are not guaranteed; nor do they form part of an offer or contract. If you require clarification on any points then please contact us, especially if you're traveling some distance to view. Please note that appliances and heating systems have not been tested and therefore no warranties can be given as to their good working order.

 **RICS** | Regulated  
Estate Agent  
and Letting Agent

[dexters.co.uk](https://www.dexters.co.uk)