



Tooting High Street, SW17

£775,000

A truly rare and stunning penthouse apartment positioned over the top floor of this Victorian building spanning to over 1,400 sqft of combined accommodation with unrivalled views overlooking Tooting and an immaculate interior composed of two double bedrooms, two bathrooms and a wrap around Terrace.

Located on Tooting High Street, the property offers superb access to the many shops, bars and restaurants of central Tooting and it's excellent transport links. The wide green open spaces of Tooting Bec Common are also within walking distance.

Features

- Penthouse Apartment
- Two Double Bedrooms
- Two Bathrooms
- Wrap Around Terrace
- Private Balcony
- Skyline Views



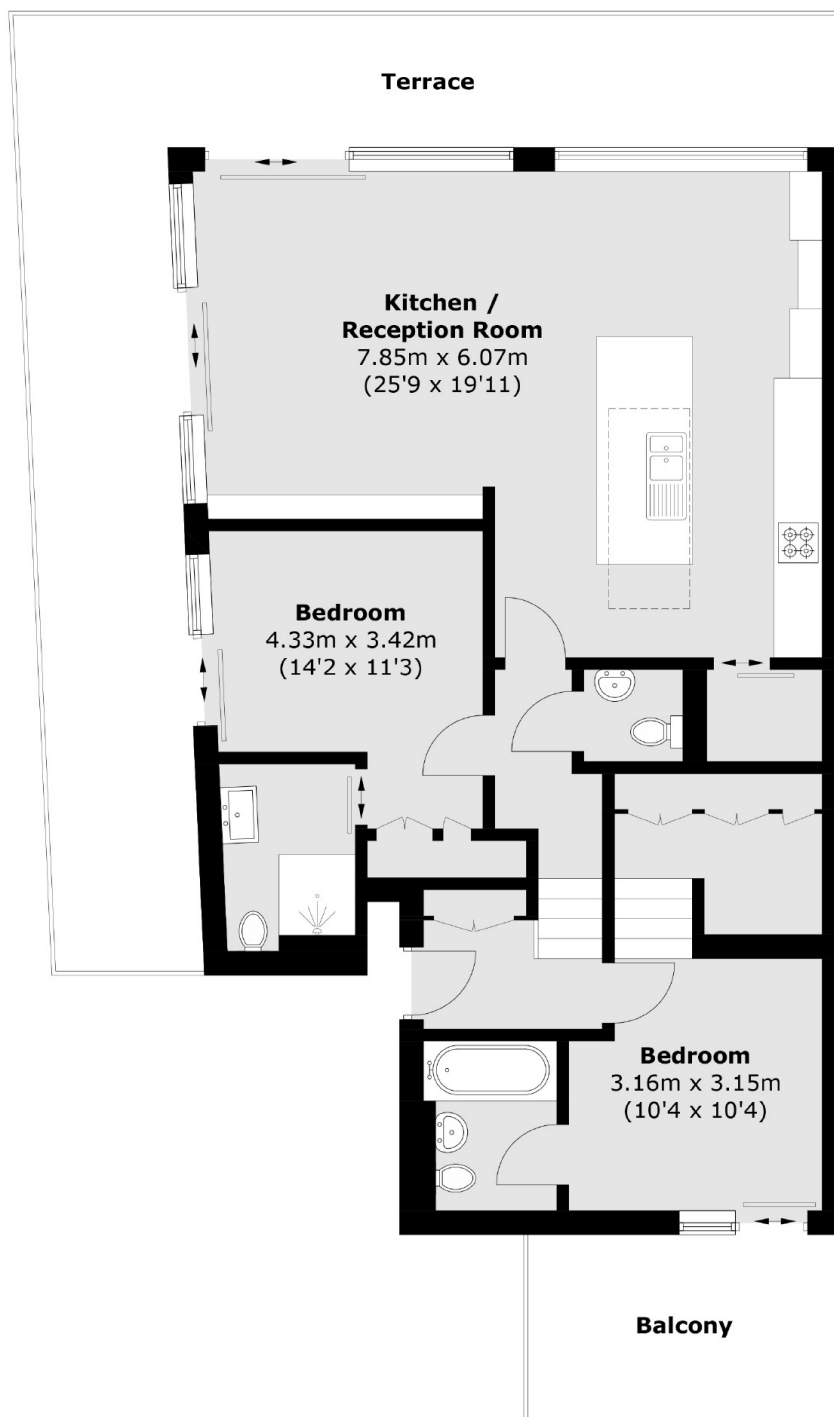
Tooting High Street, SW17

Occupying the top floor of this handsome building, the property opens onto a stylish and well arranged open-plan kitchen/reception room furnished with wall and base units, a breakfast island, integrated appliances, a pantry/utility and a comfortable seating and dining area. To the front, there is a wrap around full width balcony with south and eastern facing views over the skyline.

The property is further balanced with two generous double bedrooms, two bathrooms with underfloor heating and a separate w/c. The principal bedroom is beautifully furnished with a walk-in dressing room, a three piece ensuite and a south facing private balcony.



Tooting High Street, London, SW17



Total area (approx.): 90.6 sq. m (975.2 sq. ft)
Balcony & Terrace: 45.1 sq. m (485.4 sq. ft)