



**Longstone Road, SW17**  
**£1,195,000**

**Dexters**



## Longstone Road, SW17

An impressive mid terrace period family home in the heart of Furzedown, spanning over 1600 sqft with superb lateral living space comprising of a spacious open plan kitchen/reception, four bedrooms and a generous rear garden with further scope to extend (STPP).

Retaining exceptional proportions throughout, a wide hallway leads to a charming front reception room with large bay window, statement fireplace and high ceilings. The heart of the home lies to the rear of the property, with a superb open-plan kitchen/reception boasting a large dining and lounge space, bespoke fitted kitchen offering a vast array of wall and base units, integrated appliances, a breakfast island and french doors leading out onto a generous rear garden. A further shower room and w/c can be found on the ground floor.

The first floor is furnished with four bedrooms, a three piece family bathroom and ample storage with huge scope for extending via the loft (STPP).

Arguably one of the most sought after roads in Furzedown, Longstone Road is a quiet tree lined street located moments away from the many boutique shops and vast open spaces of Tooting Bec Common. The excellent transport links of Tooting Bec Underground, Tooting Broadway Underground and Streatham Common Railway station are also nearby.

### Features

- Four Bedrooms
- Large Garden
- Potential to Extend (STPP)
- Furzedown Village
- Over 1600 sqft
- Graveney Catchment



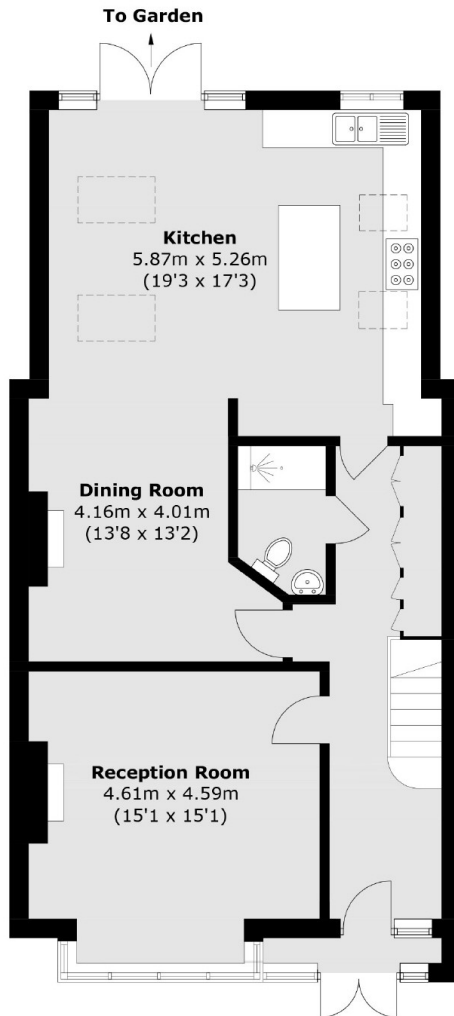








# Longstone Road, London, SW17



**Ground Floor**



**First Floor**

Total area (approx.): 150.4 sq. m (1,618.8 sq. ft)