



Garratt Lane, SW17

£385,000

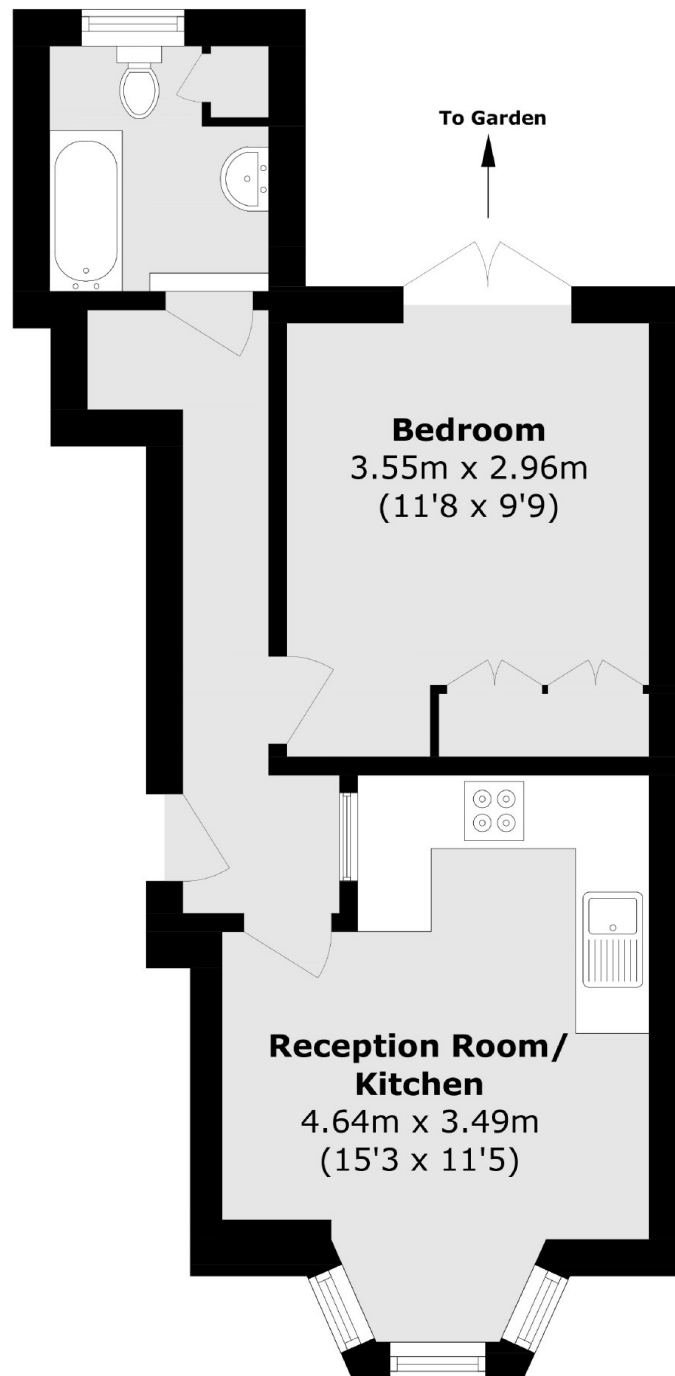
An imposing apartment set over the ground floor of this handsome Victorian home in the heart of Tooting with a superb garden. Opening onto an open plan kitchen/reception room, the property benefits from a large double bedroom, three piece family bathroom and a stunning garden.

Garratt Lane is perfectly positioned for the bustling streets, shops, bars and restaurants of Tooting Broadway with easy access to London's oldest market and the many bus and transport links of Tooting Broadway Tube Station.

Features

- One Double Bedroom
- Ground Floor Apartment
- Large Garden
- Desirable Location
- Open-Plan Kitchen/Reception
- Long Lease

Garratt Lane, London, SW17



Total area (approx.): 33.4 sq. m (359.5 sq. ft)

Dexters

Tooting
48 Tooting High Street
London
SW17 0RG
Sales
020 8545 8582

Energy Rating: . We aim to make our particulars both accurate and reliable. However they are not guaranteed; nor do they form part of an offer or contract. If you require clarification on any points then please contact us, especially if you're traveling some distance to view. Please note that appliances and heating systems have not been tested and therefore no warranties can be given as to their good working order.

 **RICS** | Regulated
Estate Agent
and Letting Agent

[dexters.co.uk](https://www.dexters.co.uk)