



Longley Road, SW17

£420,000

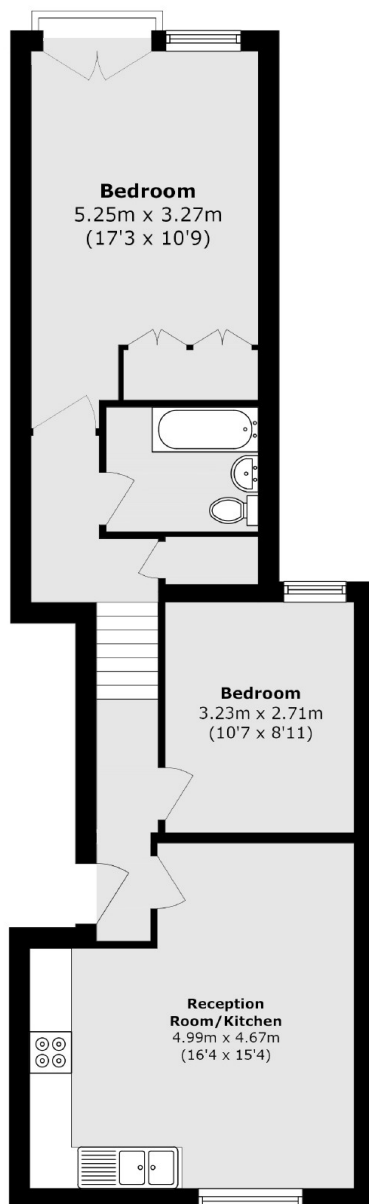
A charming and beautifully presented two double bedroom first floor apartment situated in this handsome double fronted Victorian building. The property is made up of an open plan kitchen/reception room, two double bedrooms, a three piece family bathroom and a large garden.

Longley Road is a conveniently located residential street with excellent access to the many shops, bars and restaurants of central Tooting, with easy access to Tooting Railway and Tooting Broadway Underground stations.

Features

- Two Double Bedrooms
- Family Bathroom
- Large Garden
- Open-Plan Kitchen/ Reception Room
- Desirable Location

Longley Road, London, SW17



Total area (approx.): 60.1 sq. m (646.9 sq. ft)

Dexters

Tooting
48 Tooting High Street
London
SW17 0RG
Sales
020 8545 8582

Energy Rating: . We aim to make our particulars both accurate and reliable. However they are not guaranteed; nor do they form part of an offer or contract. If you require clarification on any points then please contact us, especially if you're traveling some distance to view. Please note that appliances and heating systems have not been tested and therefore no warranties can be given as to their good working order.

 **RICS** | Regulated
Estate Agent
and Letting Agent

[dexters.co.uk](https://www.dexters.co.uk)