



Greyswood Street, SW16

£530,000

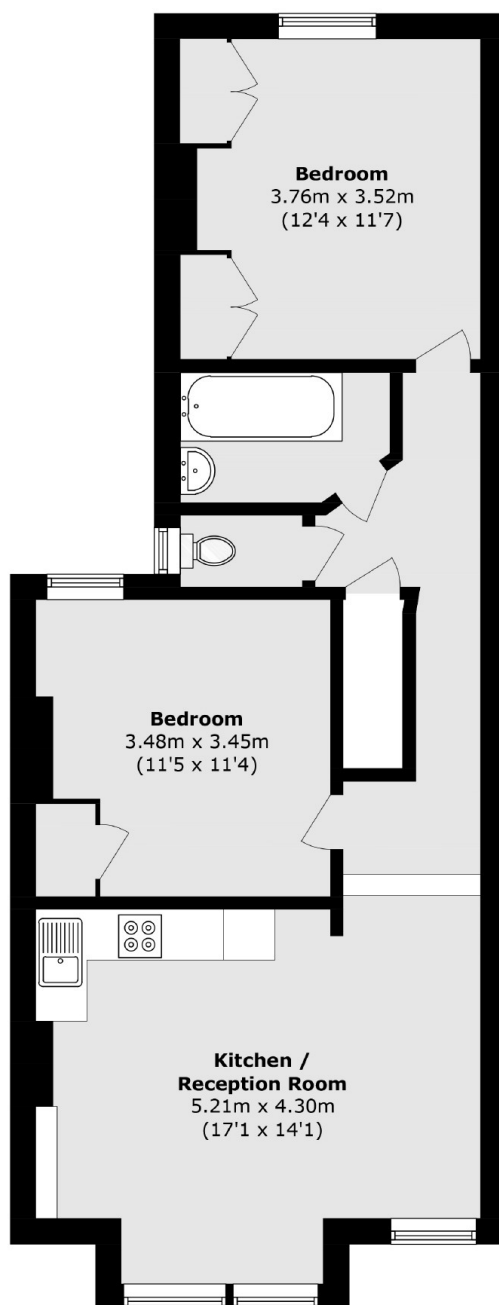
A spacious period conversion in one of the areas most sought after locations in Furzedown. This two double bedroom property has been well maintained by the current owner and has a bright open plan kitchen reception and a stylish bathroom/wc with scope for further alterations and extending over the loft (STPP).

Greyswood Street is perfectly placed for easy access to both Tooting and Streatham town centres. Tooting mainline is your closest station offer frequent links into Blackfriars and Wimbledon via Thamelink services

Features

- Period Conversion
- Excellent Condition
- Two Double Bedrooms
- Bright Reception
- Stylish Bathroom/WC
- Quiet Location

Greyswood Street, London, SW16



Total area (approx.): 61.4 sq. m (660.9 sq. ft)

Dexters

Tooting
48 Tooting High Street
London
SW17 0RG
Sales
020 8545 8582

Energy Rating: . We aim to make our particulars both accurate and reliable. However they are not guaranteed; nor do they form part of an offer or contract. If you require clarification on any points then please contact us, especially if you're traveling some distance to view. Please note that appliances and heating systems have not been tested and therefore no warranties can be given as to their good working order.

 **RICS** | Regulated
Estate Agent
and Letting Agent

[dexters.co.uk](https://www.dexters.co.uk)