



## Plum Mews, SW17

### £725,000

\*\*\*Offers In Excess Of\*\*\*

A truly stunning three bedroom ground floor maisonette set in the highly desirable Springfield Place development with accommodation that opens onto a stylish open plan kitchen/reception room, three double bedrooms, two bathrooms with access onto a private garden. Complete with an allocated parking space, a long lease and an NHBC building guarantee.

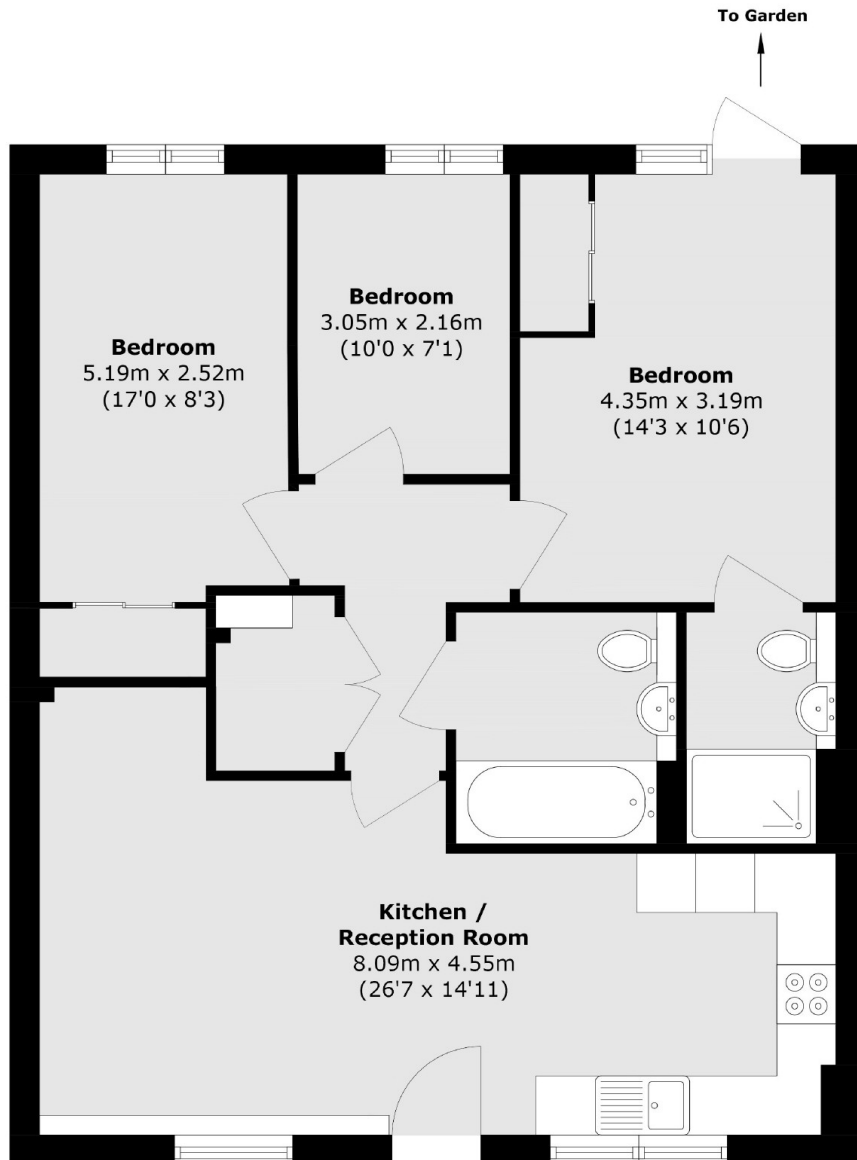
Plum Mews is part of the wider Springfield Place development of exemplary homes in the heart of Tooting Bec and Wandsworth Common. The vast amenities of both Balham and Tooting Town centres are nearby with easy access to bus and transport links via Tooting Bec and Tooting Broadway Tube Stations. As well as Wandsworth Common and Earlsfield National Rail Stations providing connections into Central London.

### Features

\*\*\*Offers In Excess Of\*\*\*

Three Bedrooms  
Two Bathrooms  
850 SQ FT  
Ground Floor Maisonette  
Allocated Parking  
999 Year Lease  
10 Year NSBC Guarantee

# Plum Mews, London, SW17



Total area (approx.): 78.9 sq. m (849.2 sq. ft.)

## Dexters

Tooting  
48 Tooting High Street  
London  
SW17 0RG  
Sales  
020 8545 8582

Energy Rating: . We aim to make our particulars both accurate and reliable. However they are not guaranteed; nor do they form part of an offer or contract. If you require clarification on any points then please contact us, especially if you're traveling some distance to view. Please note that appliances and heating systems have not been tested and therefore no warranties can be given as to their good working order.

 **RICS** | Regulated  
Estate Agent  
and Letting Agent

dexters.co.uk