



Fircroft Road, SW17

£1,850 Per calendar month

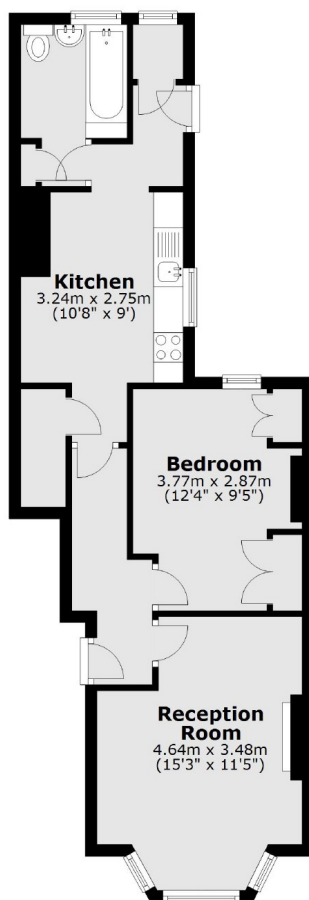
A one double bedroom ground floor flat with a spacious front reception, a double bedroom and a large eat-in kitchen with a stylish bathroom located at the rear, leading on to a private garden.

Fircroft Road is located in Tooting Bec with a range of amenities on the doorstep. The vast green open spaces of Wandsworth and Tooting Bec Common are a stones throw away, and the closest transport link via Tooting Bec Underground Station.

Features

- Ground Floor Flat
- One Double Bedroom
- Modern Kitchen
- Private Garden
- Victorian Conversion
- Desirable Location

Fircroft Road, London, SW17



Total area: approx. 48.8 sq. metres (525.0 sq. feet)