



Fountain Road, SW17

£800,000

Dexters



Fountain Road, SW17

A truly remarkable End of Terrace house that has been lovingly maintained and extended by the current owners with an exceptional plot comprising a large garden and self contained garage with direct access.

With a handsome and inviting exterior, the property has undergone immaculate refurbishment and opens onto a stunning open-plan double reception room furnished with solid wooden floors and a comfortable seating area with a large and stylish eat-in kitchen sitting at the rear of the house with the direct access onto a private landscaped garden.

Over the first floor the property retains two generous double bedrooms and a four piece family bathroom with superb scope for extending over the loft (STPP). With a sizeable detached garage at the rear, the property also benefits from rear access.

Fountain Road is located for both central Tooting & Earlsfield with their many shops, bars and restaurants on the doorstep and excellent transport links of Tooting Broadway Underground station within walking distance.

Features

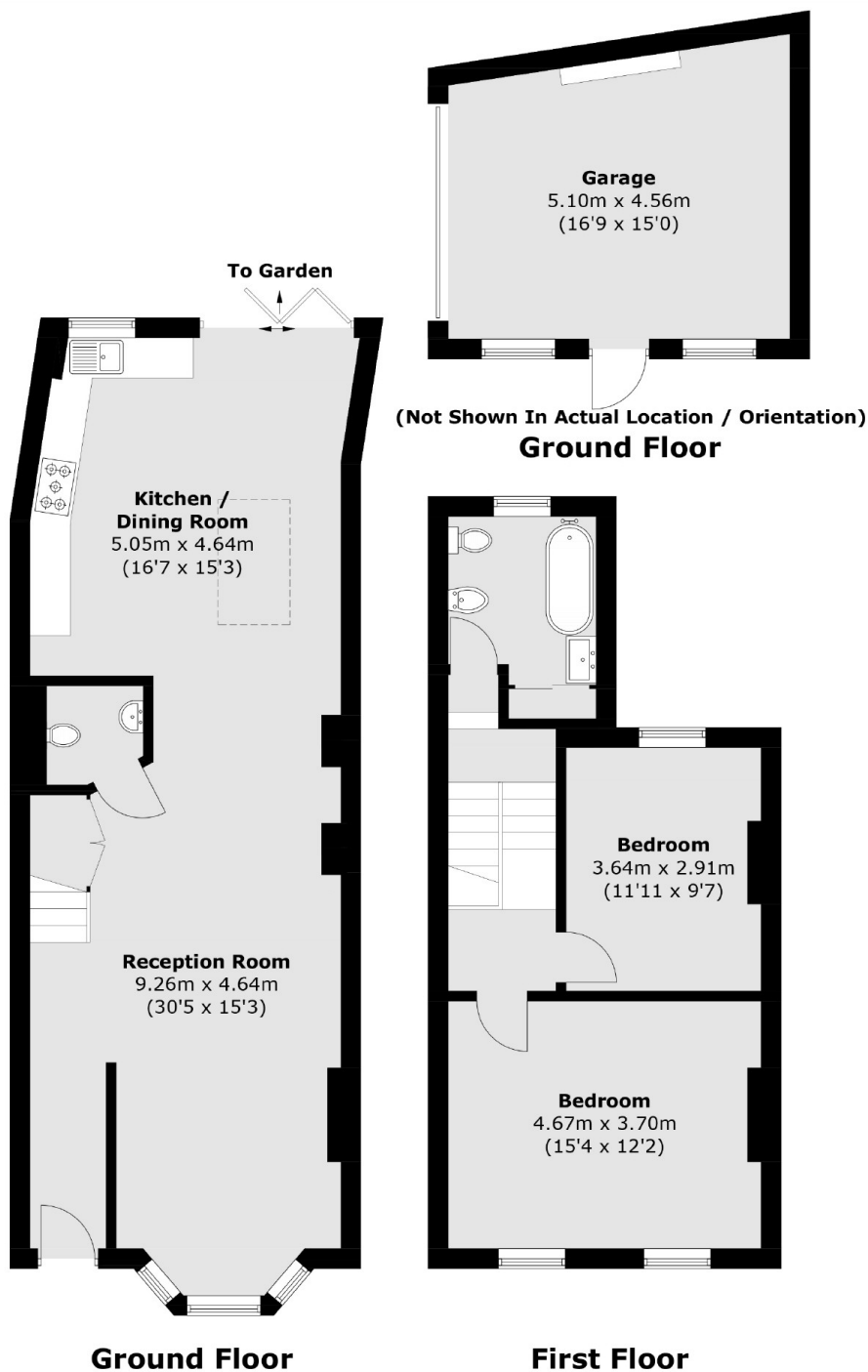
- Freehold Home
- Large Plot
- Detached Garage
- Potential to Extend (STPP)
- Open-Plan Living Space
- Desirable Location







Fountain Road, London, SW17



Approx Internal Area: 107.2 sq. m (1,153.8 sq. ft)
Garage: 21.4 sq. m (230.3 sq. ft)
Total: 128.6 sq. m (1,384.1 sq. ft)

Dexters

Tooting
48 Tooting High Street
London
SW17 0RG
Sales
020 8545 8582

Energy Rating: E. We aim to make our particulars both accurate and reliable. However they are not guaranteed; nor do they form part of an offer or contract. If you require clarification on any points then please contact us, especially if you're traveling some distance to view. Please note that appliances and heating systems have not been tested and therefore no warranties can be given as to their good working order.

 **RICS** | Regulated
Estate Agent
and Letting Agent

dexters.co.uk