



Moring Road, SW17

£595,000

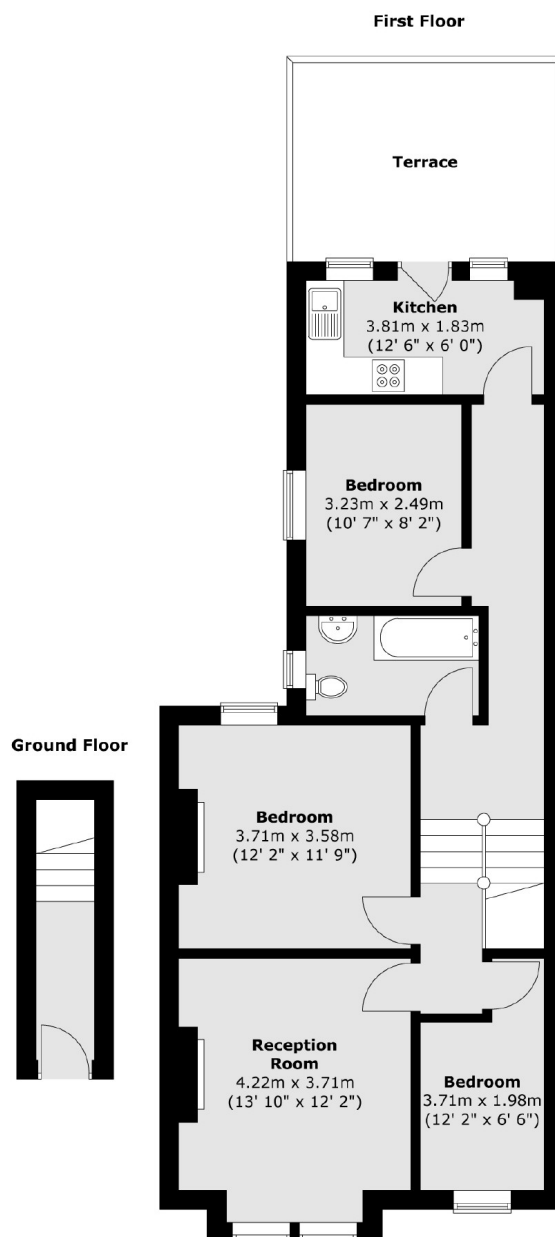
A charming and well maintained three bedroom apartment set over the first floor of this handsome Victorian building with access onto a roof terrace. The property retains a generous front reception room, a separate kitchen, three bedrooms and a three piece family bathroom with huge extension potential.

Moring Road is a highly desirable residential road nestled away within walking distance to Tooting Bec Common and the vast amenities of Tooting Bec and Balham also nearby with Tooting Bec Underground station a short stroll away.

Features

- Three Bedrooms
- Family Bathroom
- Own Front Door
- Private Terrace
- Huge Potential to Extend
- Desirable Location

Moring Road, London, SW17



Total area (approx.) : 75.9 sq. m (817 sq. ft)
Total terrace area (approx.) : 12.3 sq. m (132 sq. ft)

Dexters

Tooting
48 Tooting High Street
London
SW17 0RG
Sales
020 8545 8582

Energy Rating: . We aim to make our particulars both accurate and reliable. However they are not guaranteed; nor do they form part of an offer or contract. If you require clarification on any points then please contact us, especially if you're traveling some distance to view. Please note that appliances and heating systems have not been tested and therefore no warranties can be given as to their good working order.

 **RICS** | Regulated
Estate Agent
and Letting Agent

[dexters.co.uk](https://www.dexters.co.uk)