



## London Road, SW17

### £415,000

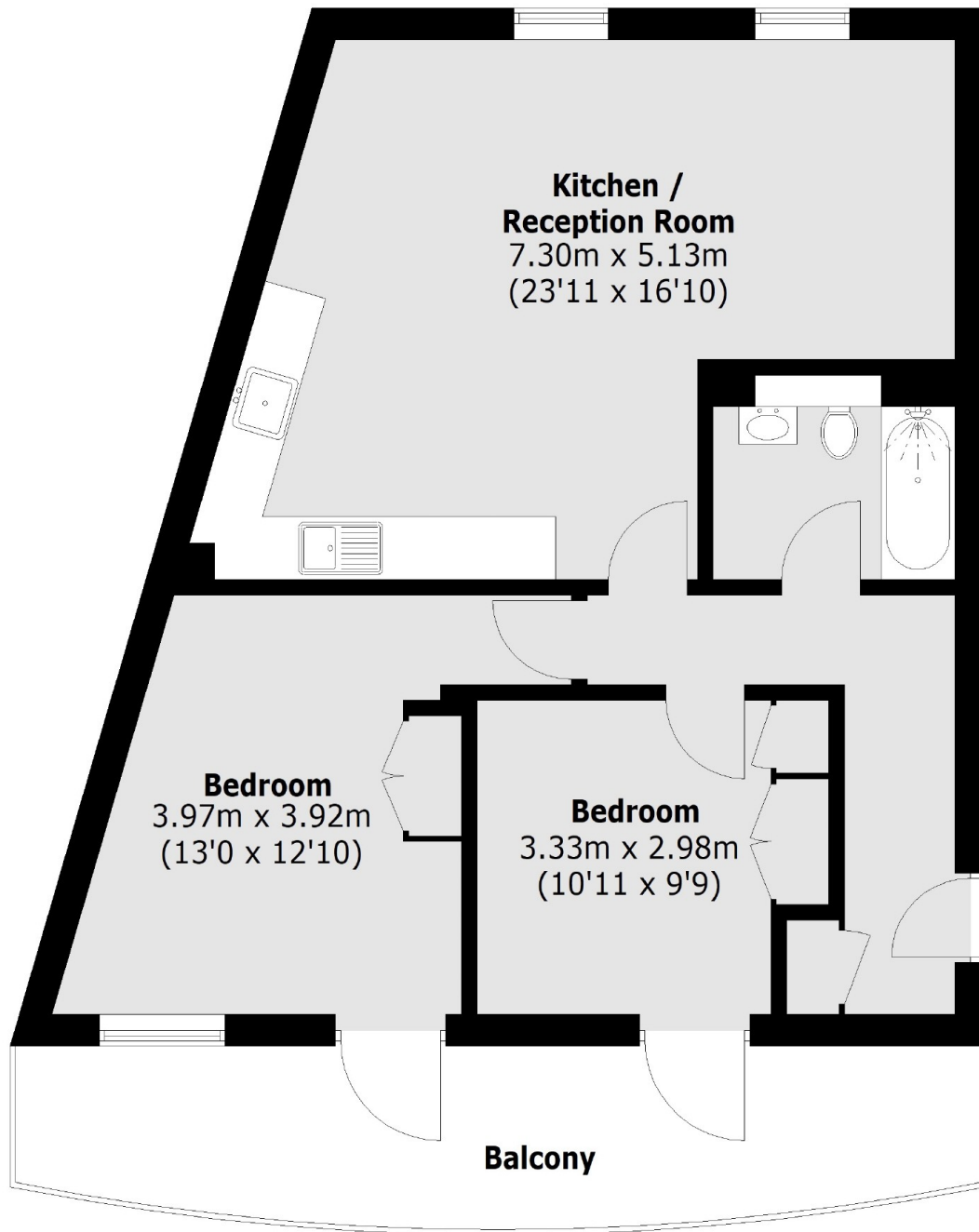
An impressive two double bedroom apartment in superb condition throughout with excellent proportions. The property retains a stunning open-plan kitchen/reception room with a comfortable dining/seating area, a modern and contemporary kitchen with integrated appliances and two double bedrooms and a terrace.

London Road is conveniently located within close proximity to an array of bars, restaurants and shops of Tooting High Street. Tooting (Overground) and Tooting Broadway Stations provides frequent transport connections and the open spaces of Figges Marsh are also nearby.

### Features

- Two Double Bedrooms
- Open Plan Kitchen/Reception Room
- Modern Apartment
- Private Terrace
- Integrated Kitchen

**London Road,  
London, SW17**



Total area (approx.): 67.87 sq. m (730.5 Sq. ft)  
Balcony: 14.72 sq. m (158.4 Sq. ft)

**Dexters**

Tooting  
48 Tooting High Street  
London  
SW17 0RG  
Sales  
020 8545 8582

Energy Rating: . We aim to make our particulars both accurate and reliable. However they are not guaranteed; nor do they form part of an offer or contract. If you require clarification on any points then please contact us, especially if you're traveling some distance to view. Please note that appliances and heating systems have not been tested and therefore no warranties can be given as to their good working order.

 **RICS** | Regulated  
Estate Agent  
and Letting Agent

[dexters.co.uk](https://www.dexters.co.uk)