



## Tooting Bec Road, SW17

£395,000

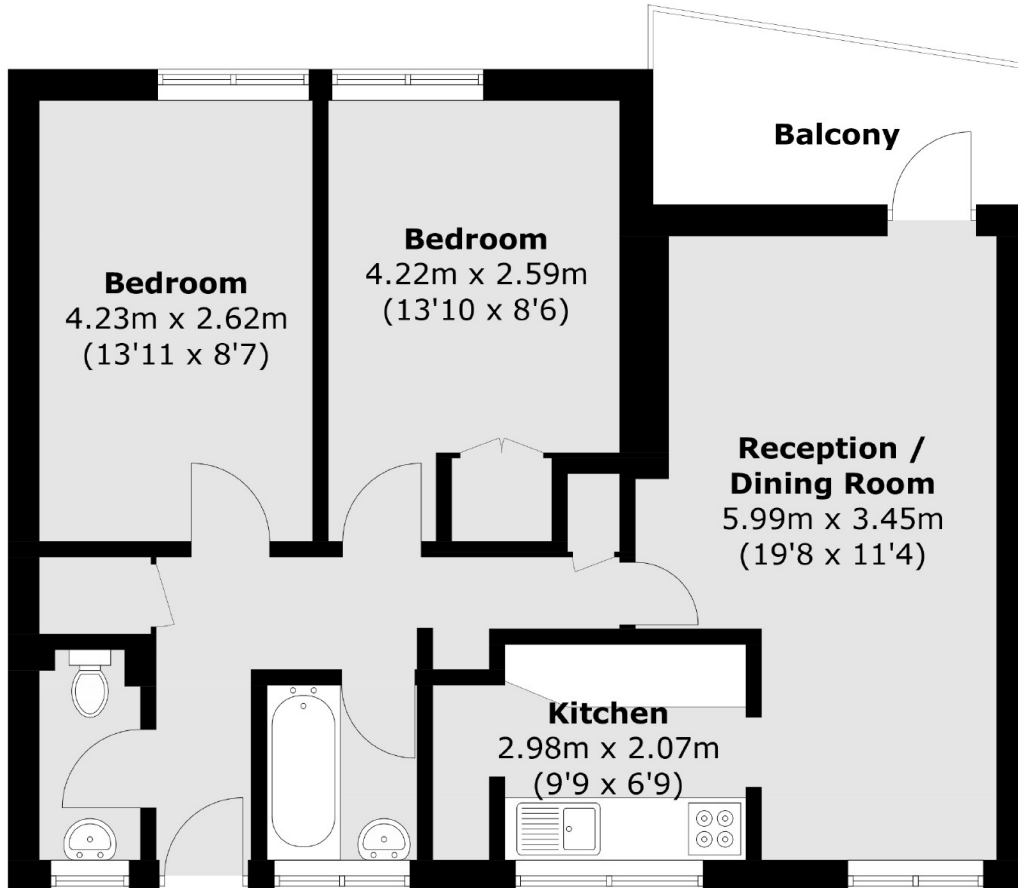
A larger than average and sizeable two double bedroom apartment overlooking Tooting Bec Common with superb proportions and a private terrace. The property opens onto a large reception room with a comfortable seating and dining area with direct access onto practical kitchen. There also a further two double bedrooms, a private terrace, a two piece family bathroom and separate w/c. The property also benefits from off-street parking.

Positioned on Tooting Bec Road, the property is within walking distance of the vast amenities of Tooting Bec and Balham Town centres with Tooting Bec Underground station a stones throw away.

### Features

- Chain Free
- Two Double Bedrooms
- Large Reception Room
- Separate Kitchen
- Large Balcony
- Desirable Location

# Tooting Bec Road, London, SW17



Total area (approx.): 62.4 sq. m (671.7 sq. ft)

Balcony area (approx.): 5.6 sq. m (60.3 sq. ft)

## Dexters

Tooting  
48 Tooting High Street  
London  
SW17 0RG  
Sales  
020 8545 8582

Energy Rating: . We aim to make our particulars both accurate and reliable. However they are not guaranteed; nor do they form part of an offer or contract. If you require clarification on any points then please contact us, especially if you're traveling some distance to view. Please note that appliances and heating systems have not been tested and therefore no warranties can be given as to their good working order.

 **RICS** | Regulated  
Estate Agent  
and Letting Agent

[dexters.co.uk](https://www.dexters.co.uk)