



## Gorrington Park Avenue, CR4

£595,000

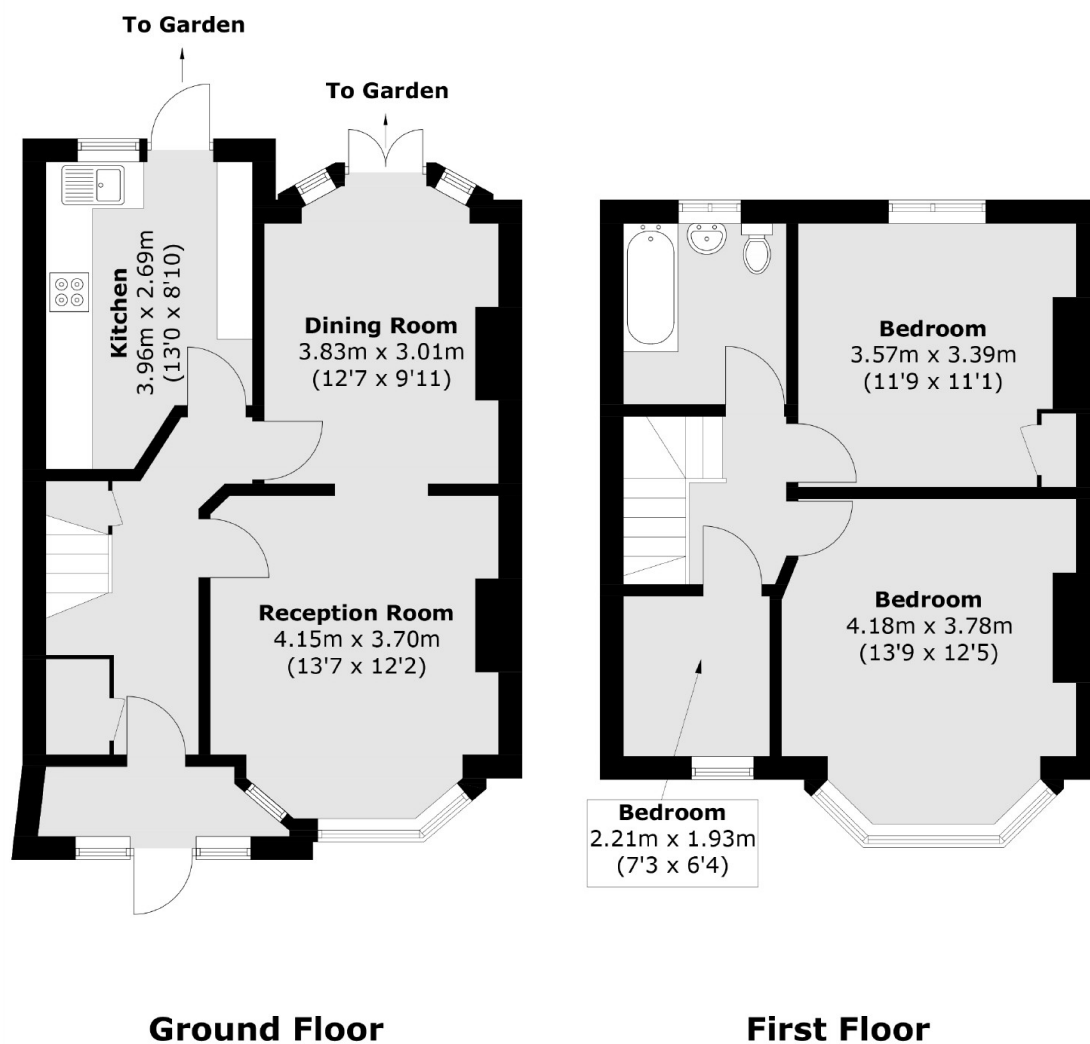
A newly refurbished mid terrace home with great proportions throughout with a generous front reception room, dining room and a fitted kitchen with direct access onto a landscaped garden. The property retains three double bedrooms and a family bathroom over the first floor with further scope to extend via the loft (STPP).

Gorrington Park Avenue is a residential road moments away from central Tooting with the vast shops, bars and restaurants it has to offer within walking distance. The green open spaces of Figges Marsh and Tooting Railway station are also a stones throw away.

### Features

- Three Bedrooms
- Chain Free
- Newly Refurbished
- Large Garden
- Potential to Extend (STPP)
- Residential Location

# Gorringe Park Avenue, Mitcham, CR4



Total area (approx.): 89.9 sq. m (967.6 sq. ft)