



Graveney Road, SW17

£425,000

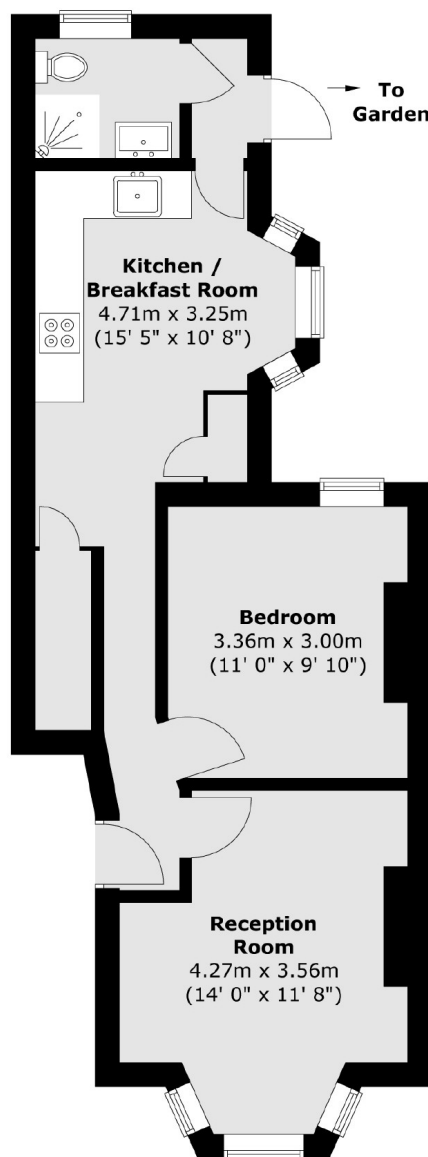
A truly exquisite ground floor garden flat with a stunning interior in the heart of Tooting with accommodation that spans to just shy of 500 sqft. Opening onto a stylish and generous front reception room furnished with a round bay window and original solid floors, there is a generous double bedroom with ample storage, a stylish and immaculate eat-in kitchen at the rear with modern family bathroom. A private rear garden is well presented and low maintenance.

Graveney Road is conveniently located for the bustling shops, bars and amenities of central Tooting with the infamous Tooting Market also on the doorstep. Excellent transport links of Tooting Broadway Underground tube station is also within walking distance.

Features

- One Double Bedroom
- Desirable Location
- Stunning Interior
- Period Features
- Private Garden
- Large Kitchen

Graveney Road, London, SW17



Total area (approx.) : 46.3 sq. m (498 sq. ft)

Dexters

Tooting
48 Tooting High Street
London
SW17 0RG
Sales
020 8545 8582

Energy Rating: . We aim to make our particulars both accurate and reliable. However they are not guaranteed; nor do they form part of an offer or contract. If you require clarification on any points then please contact us, especially if you're traveling some distance to view. Please note that appliances and heating systems have not been tested and therefore no warranties can be given as to their good working order.

 **RICS** | Regulated
Estate Agent
and Letting Agent

[dexters.co.uk](https://www.dexters.co.uk)