



Renmuir Street, SW17

£575,000

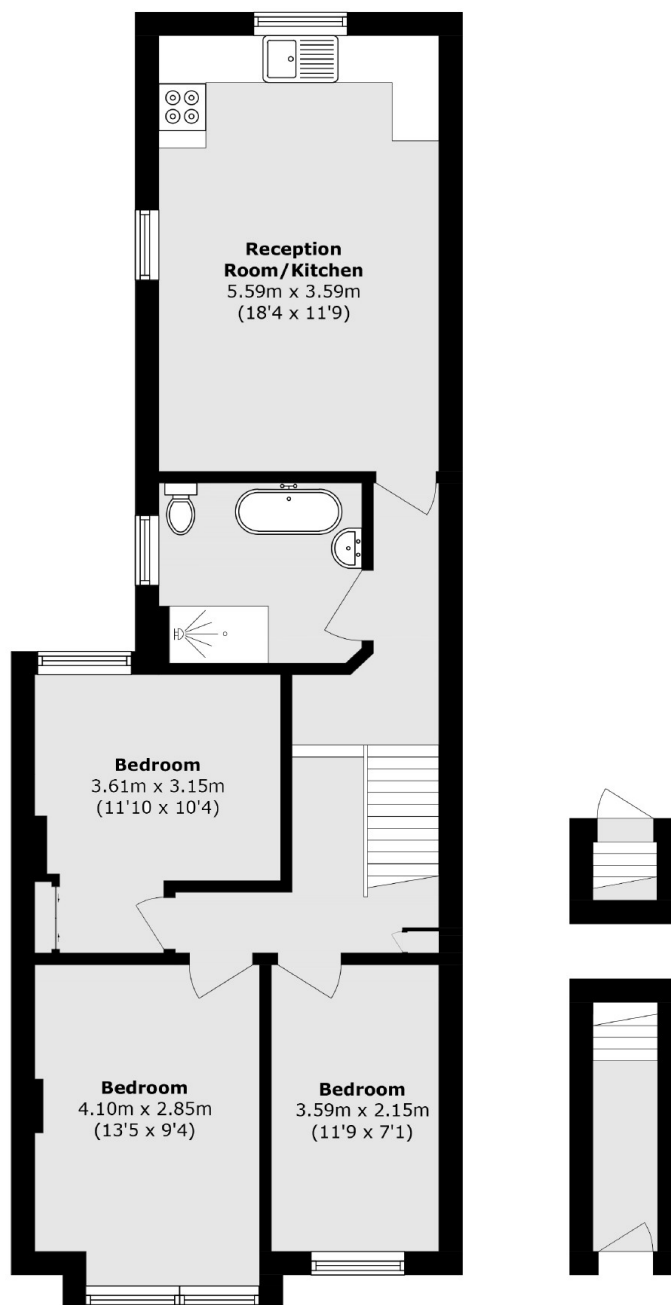
A superb example of an upper Victorian maisonette in a highly desirable area, offering an open plan kitchen and reception room, three double bedrooms, a spacious three piece bathroom and a private garden at the rear. With planning permission granted to extend into the loft (Ref:2021/4001), the property offers fantastic scope.

Renmuir Street is a quiet residential road perfectly positioned with its excellent array of shopping, leisure and restaurant amenities of central Tooting close by, and the superb transport links of Tooting Railway Station & Tooting Broadway Underground station only moments away.

Features

- Three Bedrooms
- Own Front Door
- Period Features
- Planning Permission Granted
- Private Garden
- Desirable Location

Renmuir Street, London, SW17



Total area (approx.): 72.2 sq. m (777.1 sq. ft)