



Woodland Way, CR4

£665,000

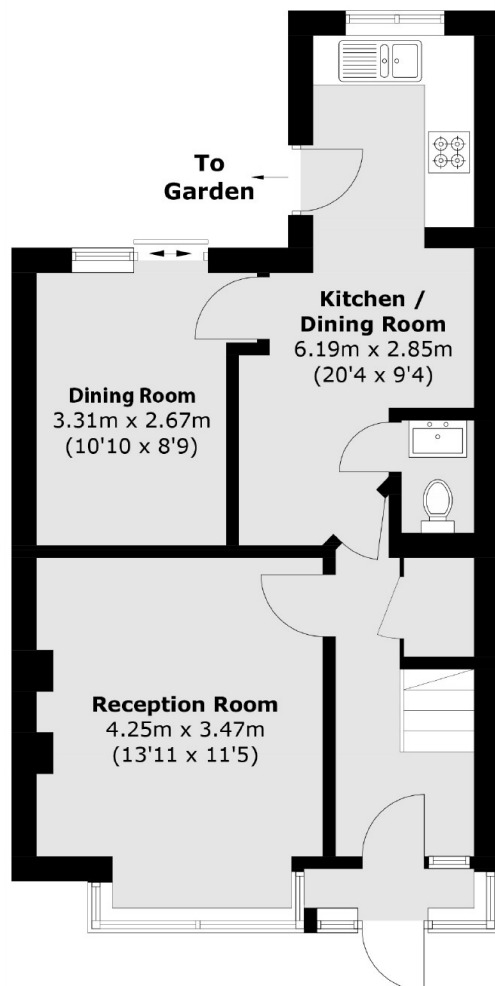
An impressive mid terrace three bedroom freehold home with huge scope for further extending and alterations (STPP). Accommodation spans over two floors and includes a front reception room, a rear dining room with an integral fitted kitchen and three bedrooms and a family bathroom over the first floor.

Woodland Way is a quiet residential road conveniently located for the many shops, bars and restaurants of central Tooting with the excellent transport links of Tooting Railway within walking distance and Tooting Broadway Underground stations also nearby.

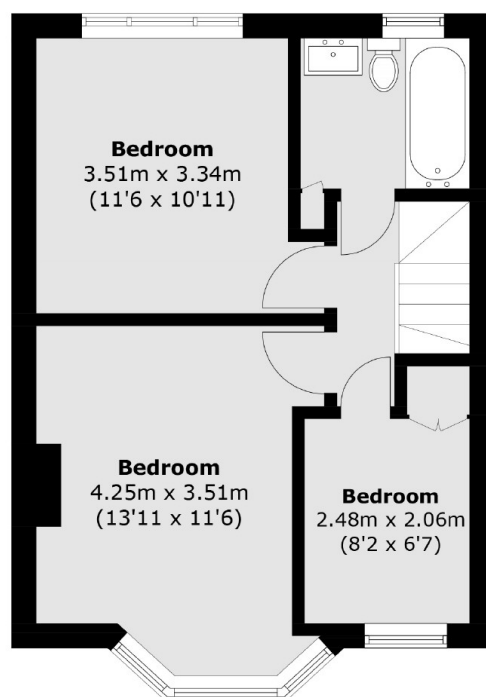
Features

- Three Bedrooms
- Chain Free
- Blank Canvas
- Potential to Extend (STPP)
- Off-Street Parking
- Two Reception Rooms

Woodland Way, Mitcham, CR4



Ground Floor



First Floor

Total area (approx.): 84.8 sq. m (912.8 sq. ft)