



Elmfield Avenue, CR4

£675,000

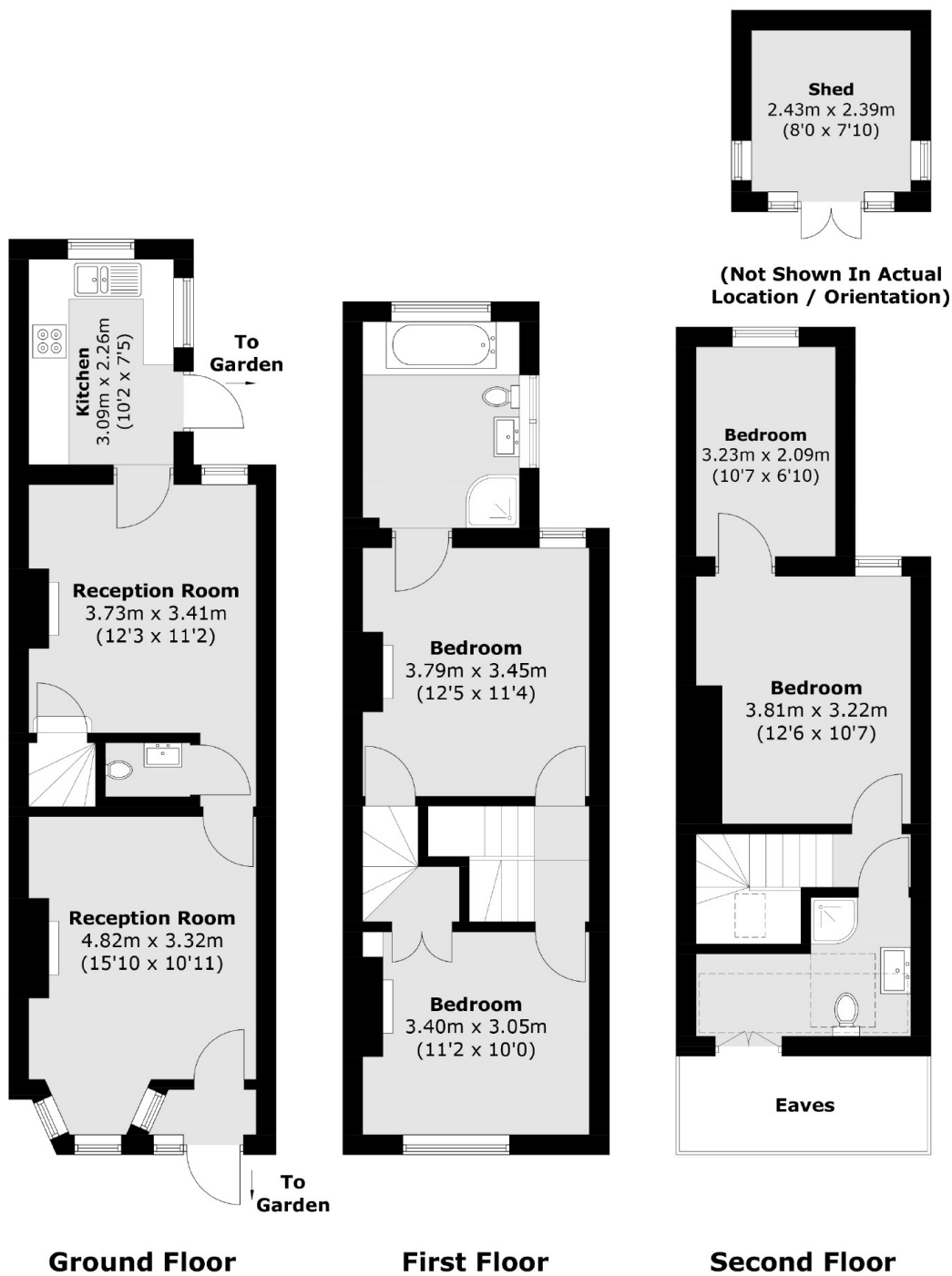
A stunning and truly exquisite end of terrace freehold home that has undergone extensive refurbishment throughout to create an unrivalled family home. This beautifully presented accommodation includes two reception rooms, a stylish kitchen, four generous sized bedrooms, two bathrooms and a private garden.

Elmfield Avenue is a quiet cul-de-sac conveniently located for the green open spaces of Figges Marsh with the vast array of shops, bars and restaurants of Mitcham & Tooting town centres nearby. The transport links of Mitcham Eastfields and Tooting Railway stations are also a short stroll away.

Features

- Four Bedrooms
- Two Bathrooms
- Freehold Family Home
- Loft Converted
- Large Private Garden
- Cul-De-Sac

Elmfield Avenue, Mitcham, CR4



Total area (approx.): 108.2 sq. m (1,164.6 sq. ft)
(Excluding Eaves)
Shed : 5.9 sq. m (63.5 sq. ft)

Dexters

Tooting
48 Tooting High Street
London
SW17 0RG
Sales
020 8545 8582

Energy Rating: . We aim to make our particulars both accurate and reliable. However they are not guaranteed; nor do they form part of an offer or contract. If you require clarification on any points then please contact us, especially if you're traveling some distance to view. Please note that appliances and heating systems have not been tested and therefore no warranties can be given as to their good working order.

RICS Regulated
Estate Agent
and Letting Agent

dexters.co.uk