



Gorrington Park Avenue, CR4

£750,000

A stunning and meticulously refurbished three bedroom mid terrace home that has been lovingly maintained by the current owners with accommodation that includes an open-plan kitchen/dining room with a stylish fitted kitchen, a spacious front reception, a winter garden and three generous bedrooms with a private garden.

Gorrington Park Avenue is a residential road moments away from central Tooting with the vast shops, bars and restaurants it has to offer within walking distance. The green open spaces of Figges Marsh and Tooting Railway station are also a stones throw away.

Features

- Three Double Bedrooms
- Stunning Interior
- Open-Plan Kitchen/Reception Room
- Potential to Extend (STPP)
- Winter Garden
- Residential Location



Gorrington Park Avenue, CR4

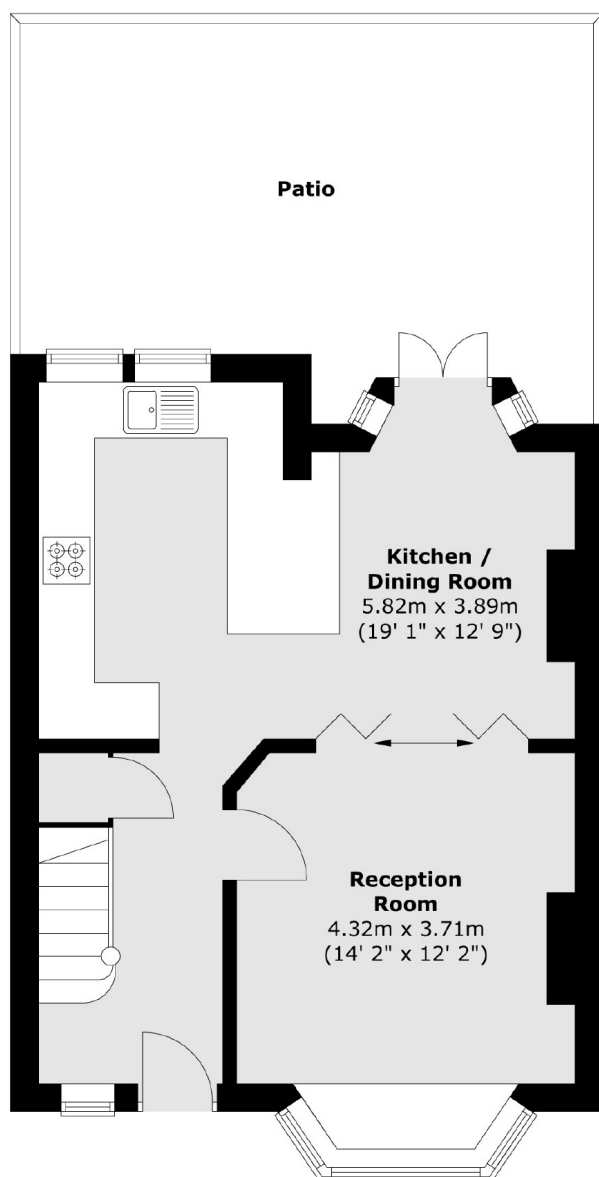
Having undergone extensive refurbishment, the property opens onto a generous and well arranged kitchen with integrated appliances, solid worktops and a superb entertaining space with ample room for dining and seating via the front lounge. Incorporating a superb winter garden with solid roof covering and a landscaped patio, the garden holds great potential for further extending (STPP).

Over the first floor the property retains a larger than average footprint with three generous double bedrooms and a three piece family bathroom. Huge scope to extend via the loft is also present for any incoming purchaser subject to planning permission and necessary consents.

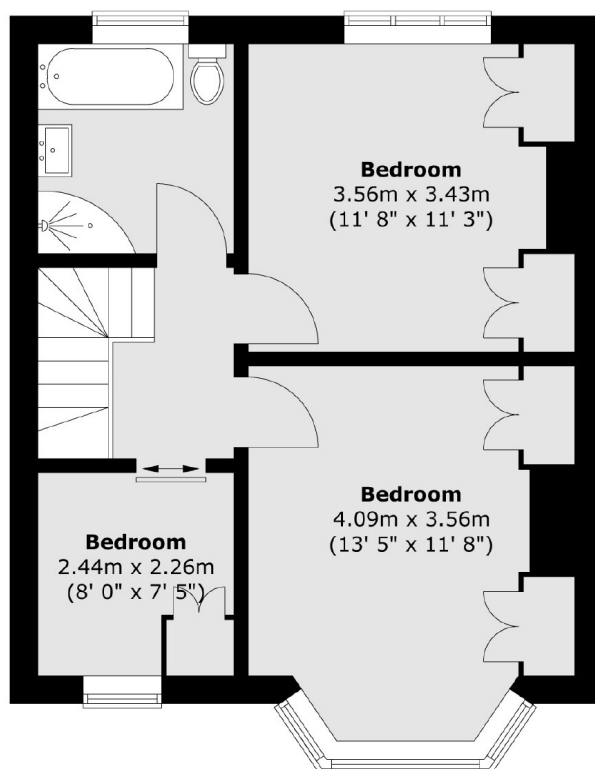


Gorringe Park Avenue, Mitcham, CR4

Ground Floor



First Floor



Total area (approx.) : 86.4 sq. m (930 sq. ft)
Total patio area (approx.) : 22.8 sq. m (246 sq. ft)