



## Gilbey Road, SW17

### £335,000

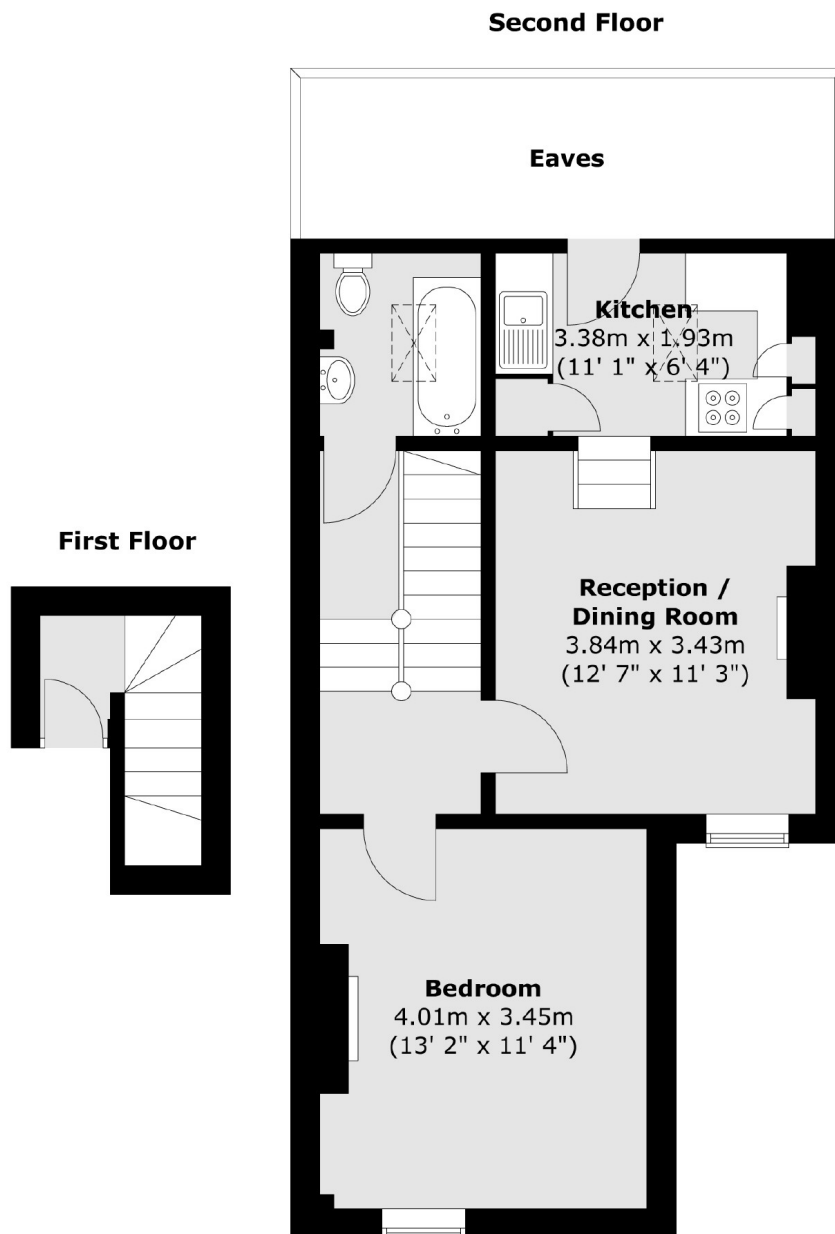
An impressive and larger than average split level one double bedroom apartment positioned by Tooting Broadway. The property comprises a spacious reception room furnished with a fireplace, a separate kitchen and a large double bedroom with a three piece family bathroom.

Gilbey Road is a sought after residential road in the heart of Tooting with it's many shops, bars and restaurants on the doorstep, with Tooting Broadway Underground just a stone's throw away which is highly convenient to get to London in a heartbeat.

### Features

- One Double Bedroom
- Split Level
- Chain Free
- Period Features
- Large Reception Room
- Desirable Location

# Gilbey Road, London, SW17



Total area (approx.) : 48.6 sq. m (523 sq. ft)

## Dexters

Tooting  
48 Tooting High Street  
London  
SW17 0RG  
Sales  
020 8545 8582

Energy Rating: . We aim to make our particulars both accurate and reliable. However they are not guaranteed; nor do they form part of an offer or contract. If you require clarification on any points then please contact us, especially if you're traveling some distance to view. Please note that appliances and heating systems have not been tested and therefore no warranties can be given as to their good working order.

 **RICS** | Regulated  
Estate Agent  
and Letting Agent

[dexters.co.uk](https://www.dexters.co.uk)