



Barringer Square, SW17

£435,000

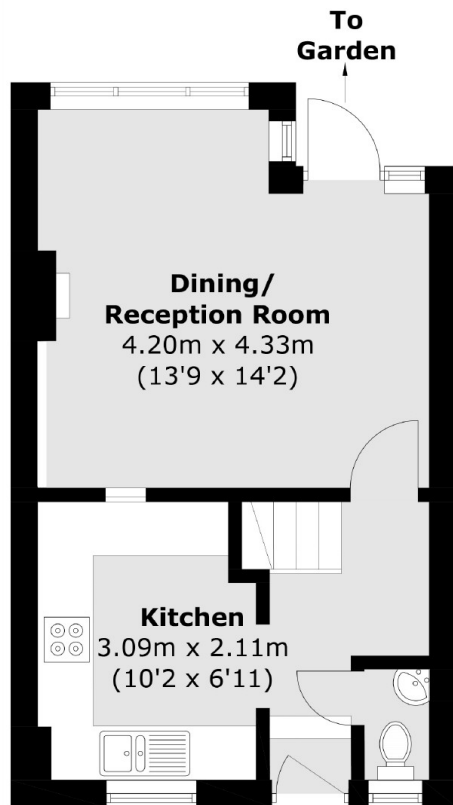
A wonderfully maintained split level maisonette moments away from Tooting Bec with split level accommodation spanning over two floors, comprising a generous separate reception room, private garden, large kitchen and two double bedrooms with a stylish three piece family bathroom over the first floor and a downstairs w/c.

Situated only moments from Tooting Bec Common, Barringer Square is perfectly placed for the open spaces and the many bars, restaurants and shops of Tooting and Balham High Street. Tooting Bec Underground Station is only a short stroll away.

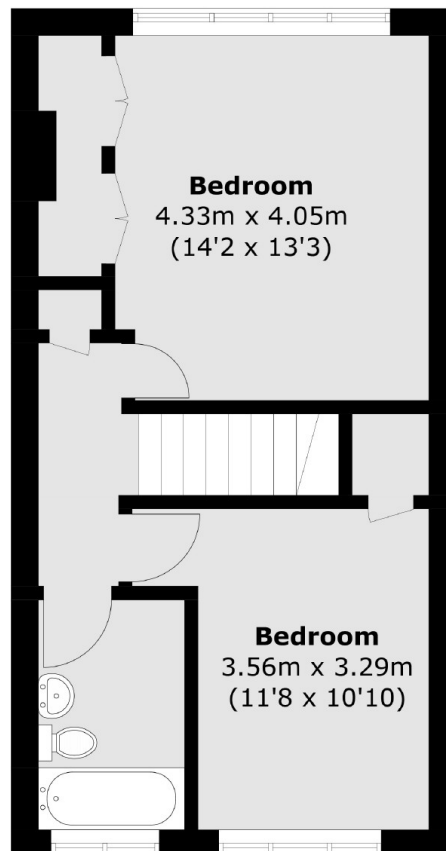
Features

- Two Double Bedrooms
- Split Level
- Private Garden
- Own Front Door
- Desirable Location
- Front Reception Room

Barringer Square, London, SW17



Ground Floor



First Floor

Total area (approx.): 69.0 sq. m (742.7 sq. ft)