



## Worslade Road, SW17

### £650,000

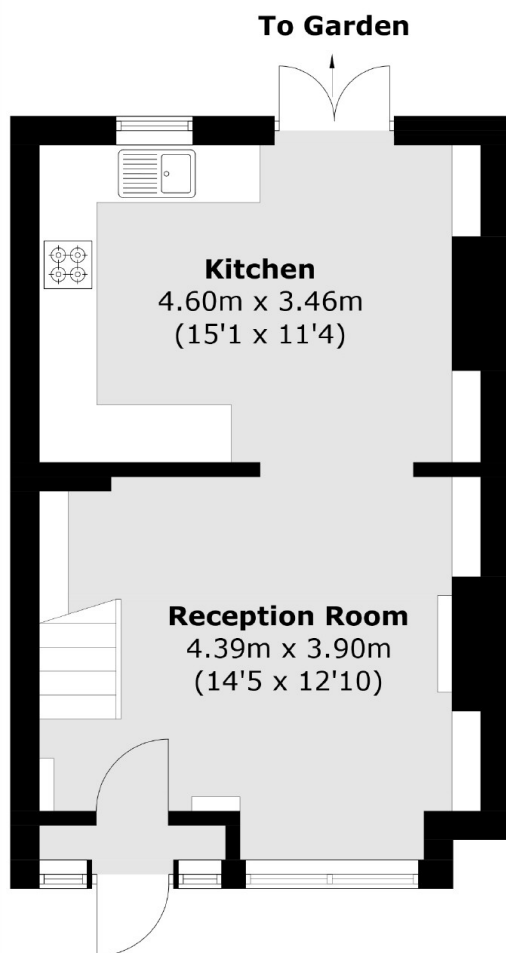
A charming mid terrace period home with an abundance of potential to extend and add value (STPP) in a highly desirable location in Tooting. Accommodation opens onto a large reception room, a spacious kitchen with access onto a private garden, and two double bedrooms and a family bathroom positioned over the first floor. The property is chain free.

Worslade Road is situated within a popular grid of roads providing easy access to the many shops, bars and restaurants of Tooting, Earsfield and Wimbledon Town Centres, with the excellent transport links of Tooting Broadway underground station also a short walk away.

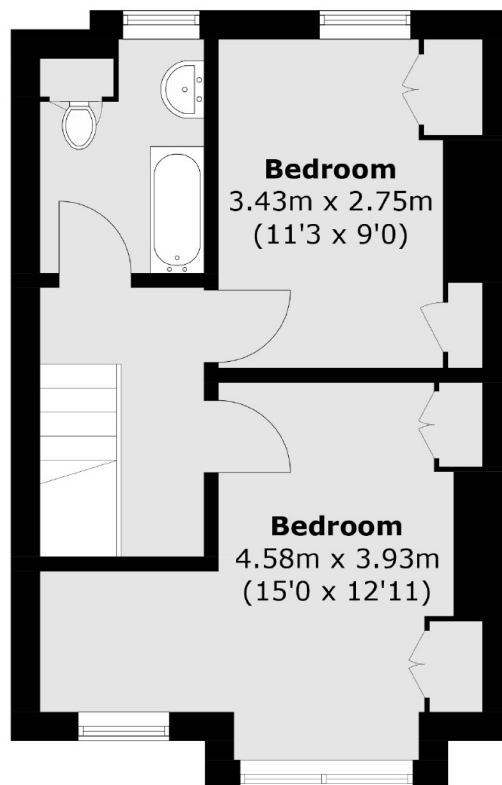
### Features

- Freehold Home
- Chain Free
- Two Double Bedrooms
- Westernly Facing Garden
- Potential to Extend (STPP)
- Blank Canvas

# Worslade Road, London, SW17



**Ground Floor**



**First Floor**

Total area (approx.): 67.5 sq. m (726.6 sq. ft)