



Fountain Road, SW17

£575,000

****OFFERS IN EXCESS OF****

A charming and well positioned mid terrace freehold home in the heart of Tooting with superb potential for extending and further alterations (STPP). Current accommodation includes three double bedrooms, a front reception room, a large dining room and a galley kitchen with a family bathroom.

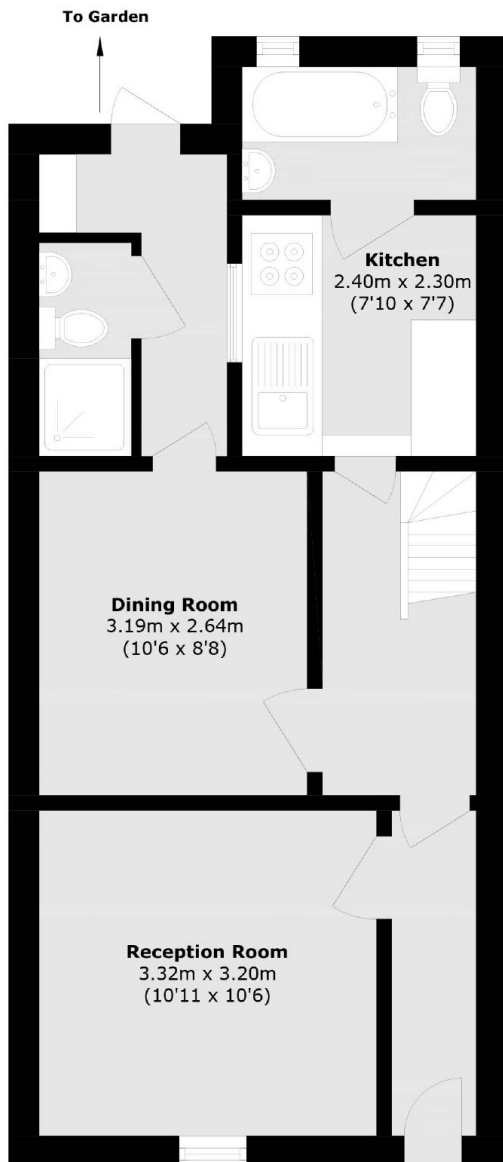
Fountain Road is located for both central Tooting & Earlsfield with their many shops, bars and restaurants on the doorstep and excellent transport links of Tooting Broadway Underground station within walking distance.

Features

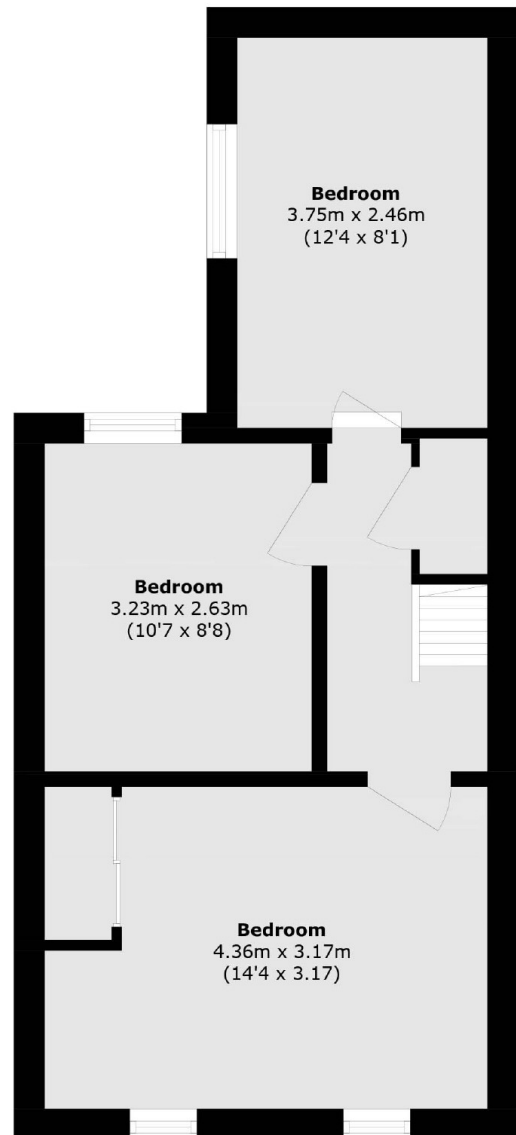
****OIEO****

- Three Double Bedrooms
- Freehold House
- Chain Free
- Blank Canvas
- Potential to Extend (STPP)
- Desirable Location

Fountain Road, London, SW17



Ground Floor



First Floor

Total area (approx.): 81.8 sq. m (880.4 sq. ft)