



Peartree Avenue, SW17

£395,000

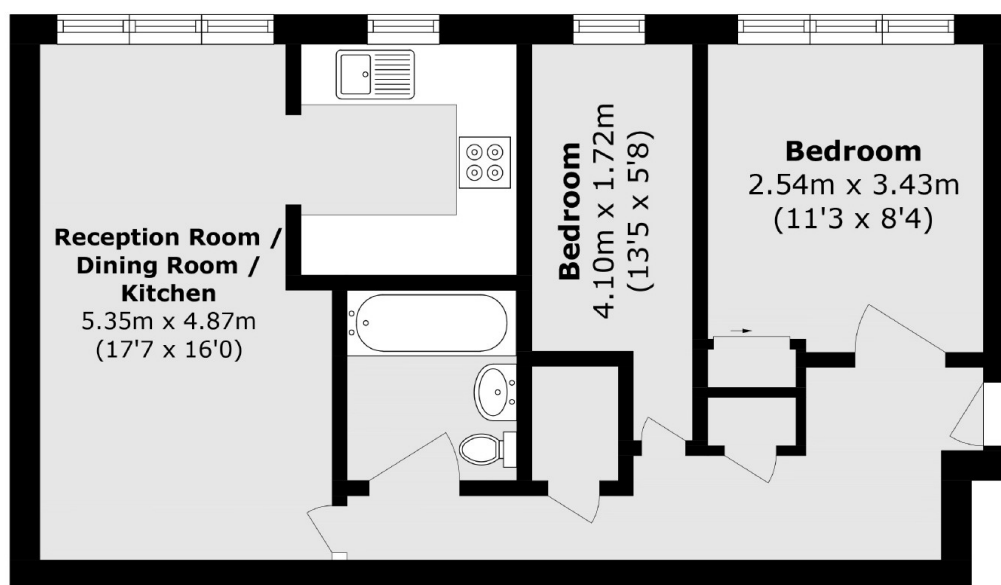
A beautifully presented and wonderfully refurbished two double bedroom apartment that has been lovingly maintained by the current owners. The property opens onto a superb front reception room with a comfortable seating/dining area and a stylish fitted kitchen. Accommodation also includes two double bedrooms and a three piece family bathroom.

Equidistant to Tooting and Earlsfield town centres, Peartree Avenue is centrally located for excellent transport links providing easy access into the City and Central London along with a large array of restaurants and bars within easy reach.

Features

- Two Double Bedrooms
- Private Parking
- Excellent Location
- Stylish Interior
- Separate Kitchen
- Newly Refurbished

Peartree Avenue, London, SW17



Total area (approx.): 47.8 sq. m (514.5 sq. ft)