



## Longley Road, SW17

### £750,000

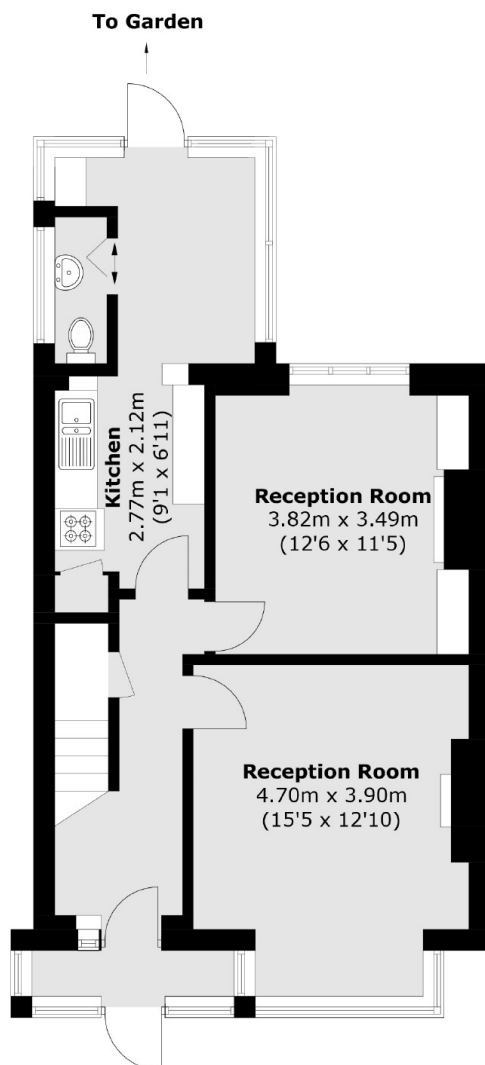
A larger than average semi-detached freehold home with huge scope for extending and modernisations with three bedrooms, two reception rooms and a kitchen. The property retains a south facing garden and is sold chain free.

Longley Road is a conveniently located residential street with excellent access to the many shops, bars and restaurants of central Tooting, with easy access to Tooting Railway and Tooting Broadway Underground stations.

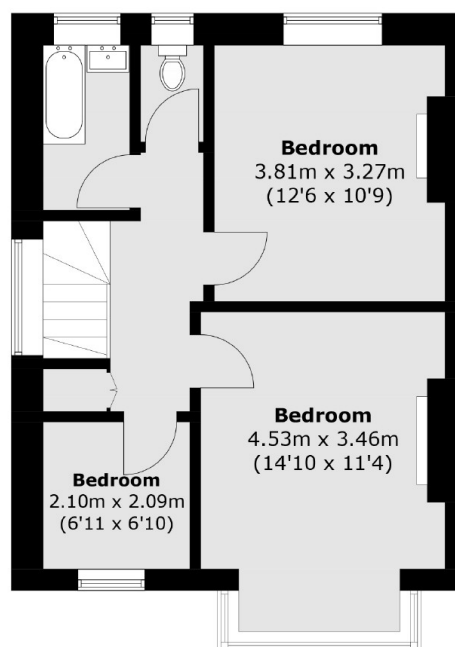
### Features

- Three Bedrooms
- Potential to Extend (STPP)
- Desirable Plot
- Large South Facing Garden
- Chain Free
- Blank Canvas

# Longley Road, London, SW17



**Ground Floor**



**First Floor**

Total area (approx.): 106.1 sq. m (1,142.1 sq. ft)