



Bruce Road, CR4

£625,000

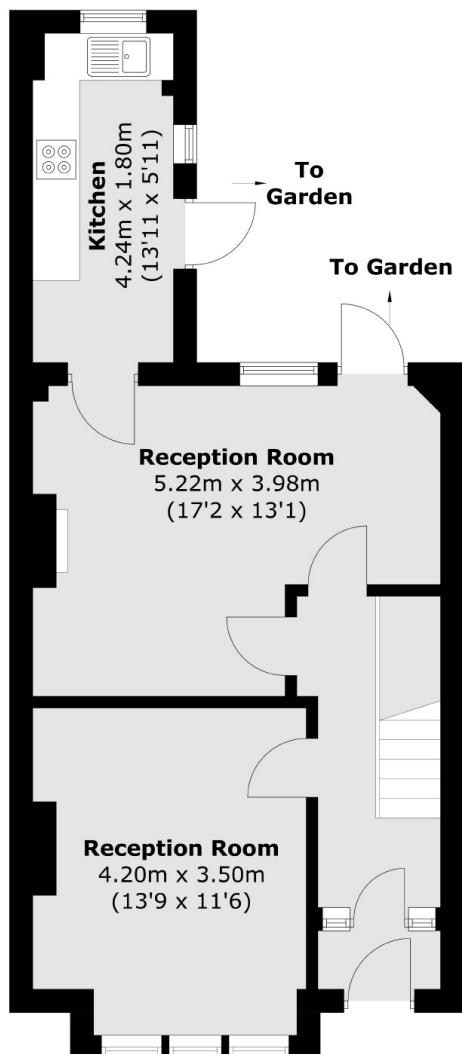
A generous three bedroom mid terrace home requiring modernisation with a large plot and scope for further alterations and extension potential (STPP). The property comprises a front reception room, a large dining room with an integral kitchen, three bedrooms, a three piece family bathroom and large garden.

Bruce Road is conveniently located for the many shops, bars and restaurants of central Tooting with both Tooting Railway and Tooting Broadway Underground stations within walking distance. The green open spaces of Figges Marsh are also nearby.

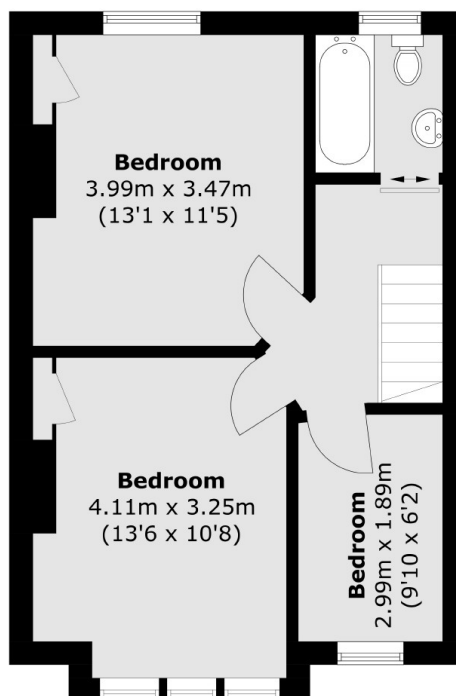
Features

Three Bedroom
Freehold Home
Chain Free
Potential to Extend (STPP)
Front Reception Room
Desirable Location

Bruce Road, Mitcham, CR4



Ground Floor



First Floor

Total area (approx.): 92.5 sq. m (995.7 sq. ft)