



Pretoria Road, SW16

£550,000

An impressive and lovingly maintained ground floor apartment in the heart of Furzedown village with accommodation extending to 900 sqft retaining period features and it's original charm throughout.

Pretoria Road is a highly desirable residential street within walking distance of the boutique shops and cafés of Moyser Road and sits within proximity of the outstanding Graveney School. The vast green spaces of Tooting Bec Common and transport links of Tooting Bec Underground and Streatham Common Overground are also nearby.

Features

- Two Double Bedrooms
- Large Garden
- Basement/Study
- Furzedown Village
- Period Features
- Eat-In Kitchen



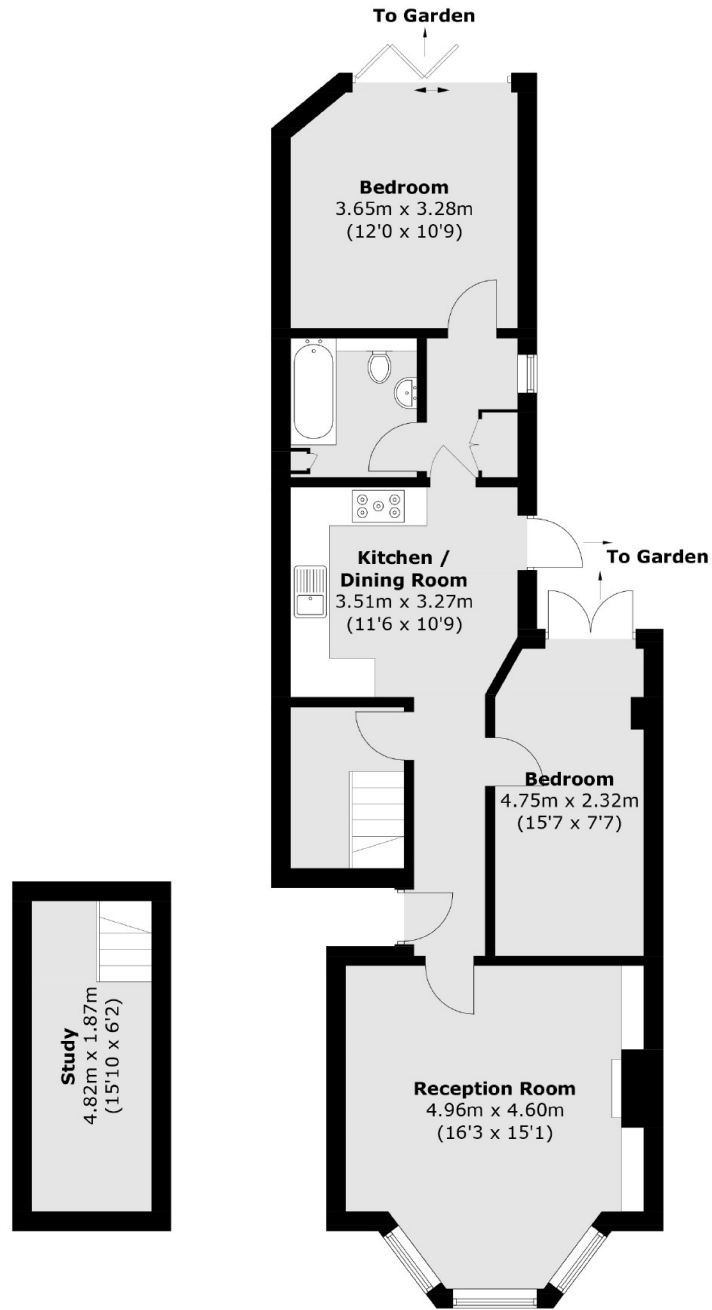
Pretoria Road, SW16

With a handsome red bricked exterior, the property welcomes you in via a spacious hallway furnished with original floors and opens onto a sizeable front reception room that has been wonderfully arranged with an original fireplace, bespoke shelving and a comfortable seating and dining area.

At the heart of the property, there is a spacious yet stylish kitchen with a vast array of wall and base units including ample space for dining. The property offers two generous double bedrooms, with the principal bedroom furnished with bi-folding doors leading onto a superb rear garden and a basement level organised as home office/study with an abundance of storage space.



Pretoria Road, London, SW16



Lower Ground Floor

Ground Floor

Total area (approx.): 83.7 sq. m (900.9 sq. ft)