



Boundary Road, SW19

£575,000

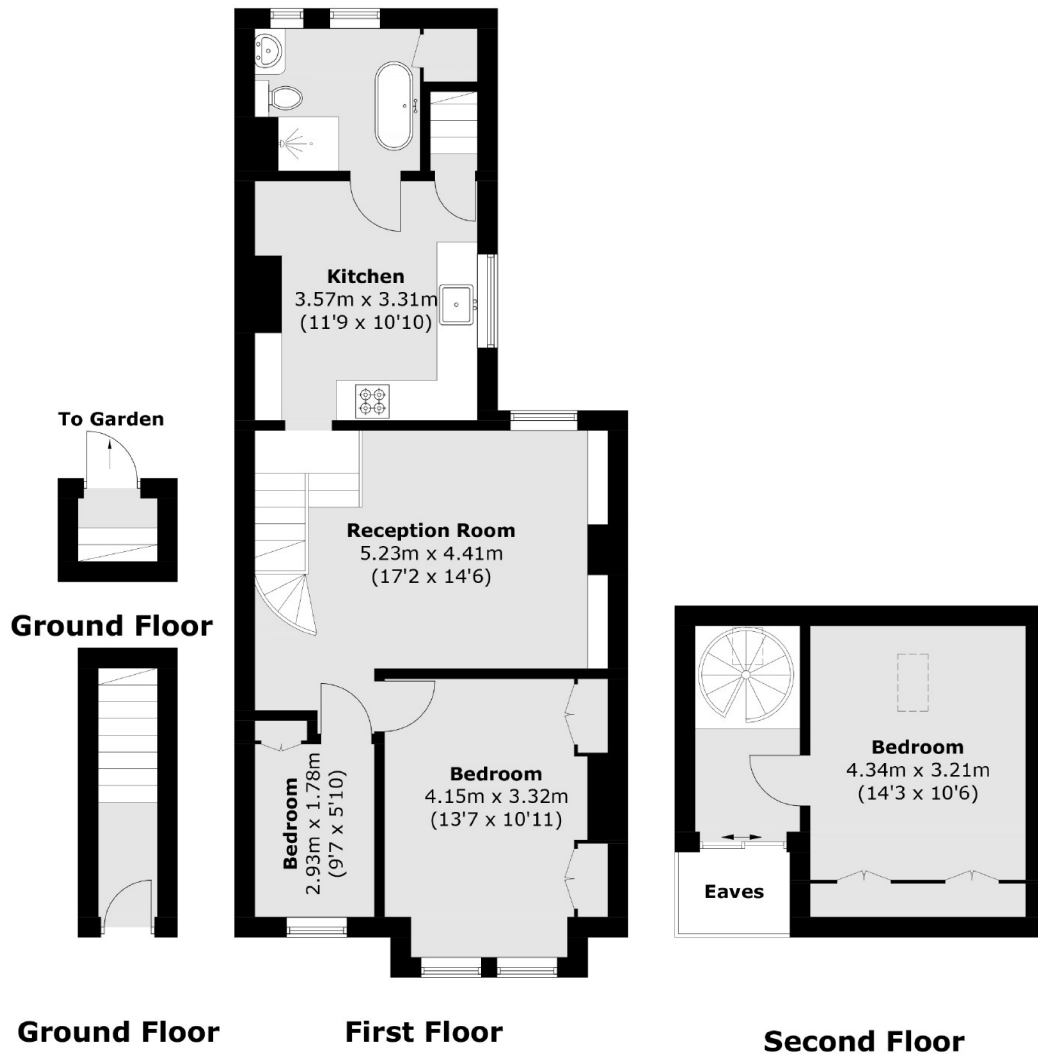
A stunning example of a three bedroom split level apartment set over the first and top floor of this handsome Victorian building with three bedrooms, a separate reception room, a large eat-in kitchen, a family bathroom and a generous garden.

Boundary Road is nestled away in the heart of Colliers Wood with the many shops and amenities on the doorstep, including the Tandem Centre with a Sainsbury's & M&S nearby. The wide green open spaces of Wandale Park and excellent transport links of Colliers Wood & Tooting Broadway Underground stations are also a stones throw away.

Features

- Split Level Maisonette
- Own Front Door
- Private Garden
- Further Potential to Extend (STPP)
- Stylish Kitchen
- Desirable Location

Boundary Road, London, SW19



Total area (approx.): 83.3 sq. m (896.6 sq. ft)
(Excluding Eaves)