



Heaton Road, CR4

£1,900 Per calendar month

A split level apartment with high ceilings, bright open-plan living, a modern kitchen with dishwasher and two double bedrooms.

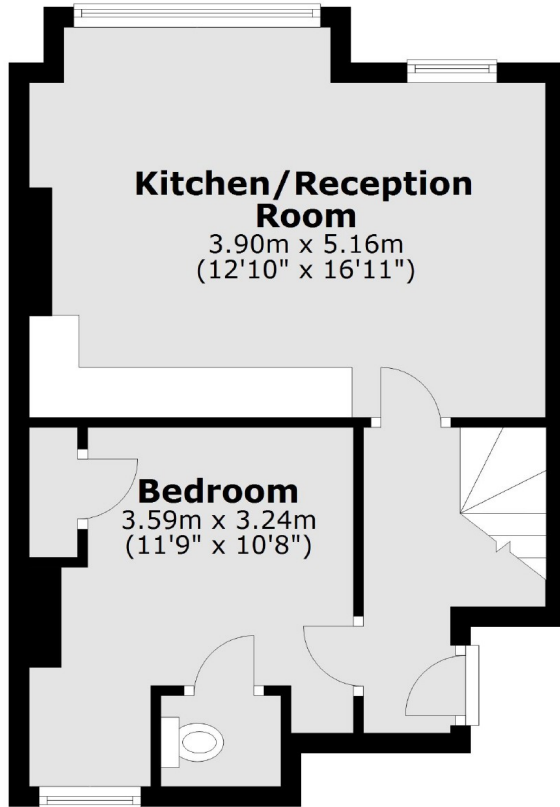
Heaton Road is a residential Road in Tooting, within close proximity to both Tooting Overground and Underground Stations, the Gorringe Park Pub as well as other local amenities.

Features

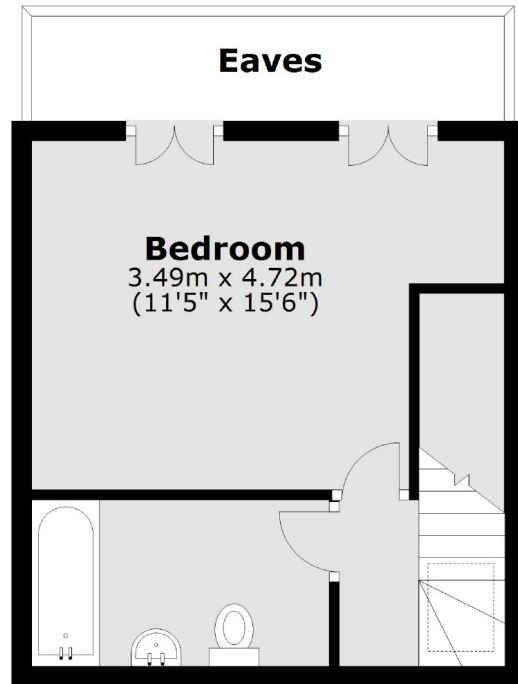
- Split Level
- High Ceilings
- Two Double Bedrooms
- Open-Plan
- Dishwasher
- Ideal Location

Heaton Road, Mitcham, CR4

First Floor



Second Floor



Total area: approx. 60.0 sq. metres (645.4 sq. feet)